



LA CHIVA INTERIOR FOOD TRUCK

SIGNAGE PACKAGE - 03.12.19

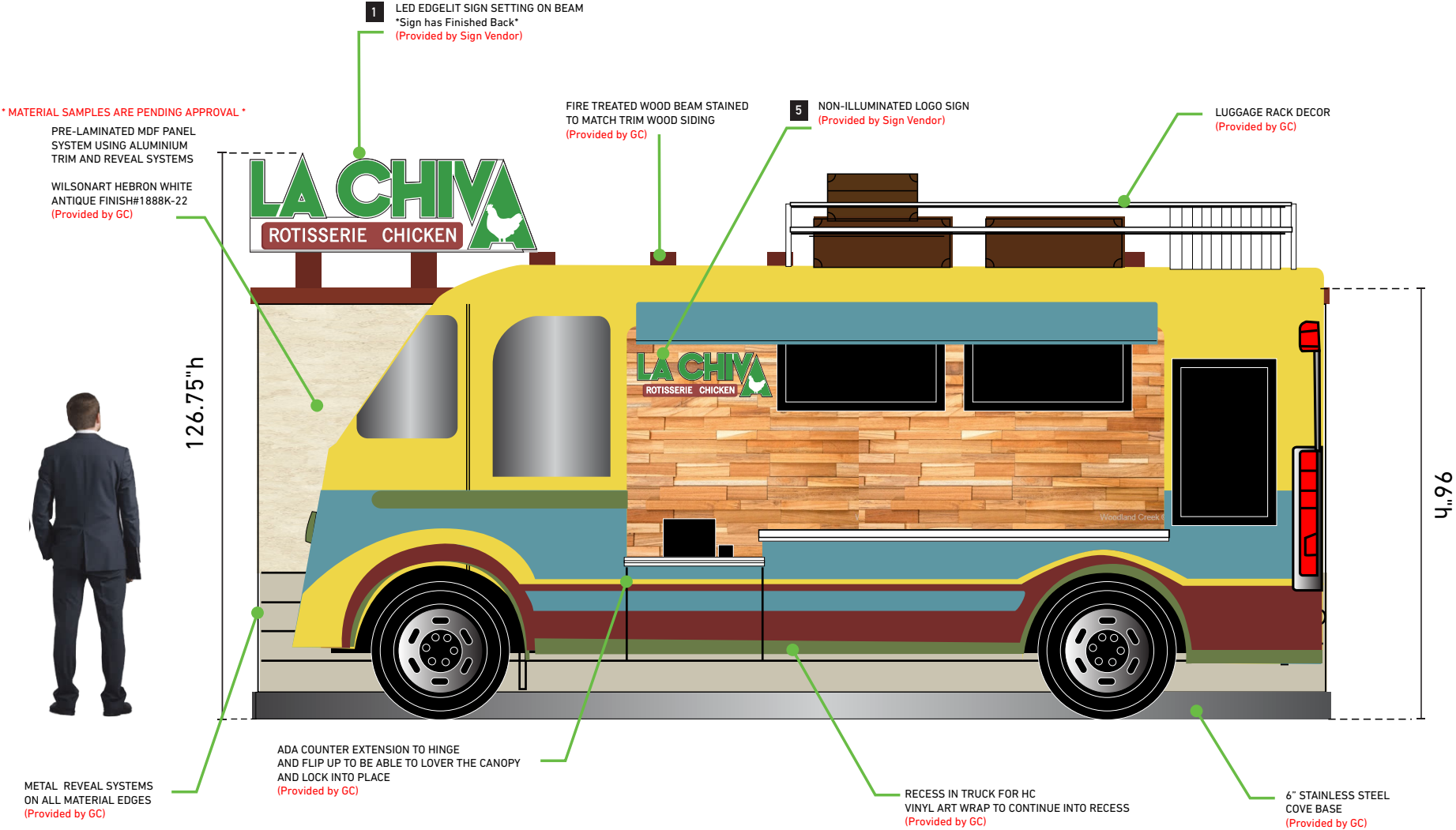
ITEM		QTY	DETAILS
1	LA CHIVA LOGO STOREFRONT SIGN	2	LED ILLUMINATED
2	PVC CHICKEN CORNER WALL ART	1	NON-ILLUMINATED
3	WOOD CHICKEN WALL ART	1	LED ILLUMINATED
4	LA CHIVA LOGO SIGN	1	LED ILLUMINATED
5	LA CHIVA LOGO	1	NON-ILLUMINATED

VERSION - 03.12.19

LA CHIVA Logo Sign

Interior - Front Elevation

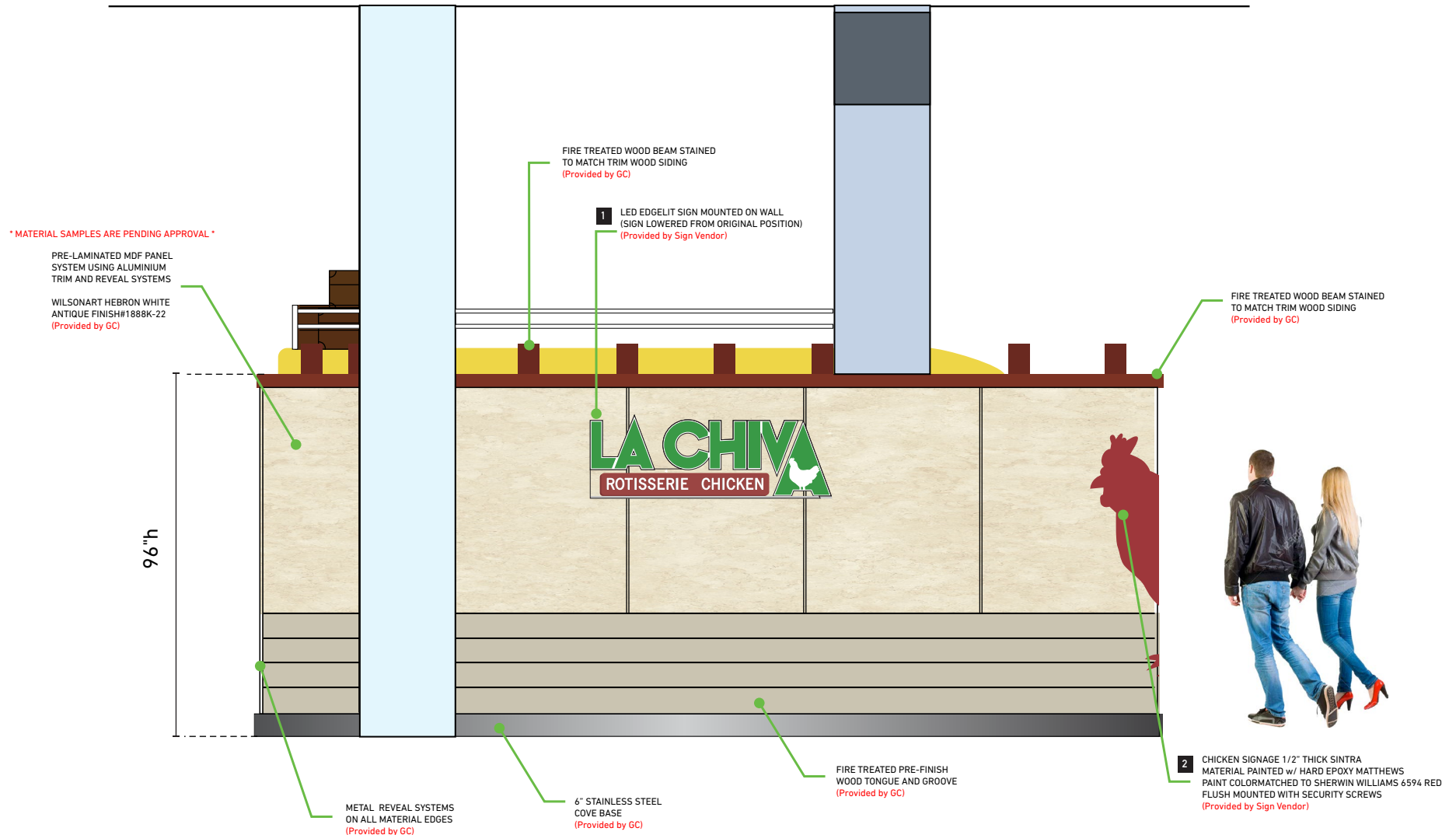
****NO weeps, visible vents or light leaks permitted****



LA CHIVA Logo Sign

Interior - Back Elevation

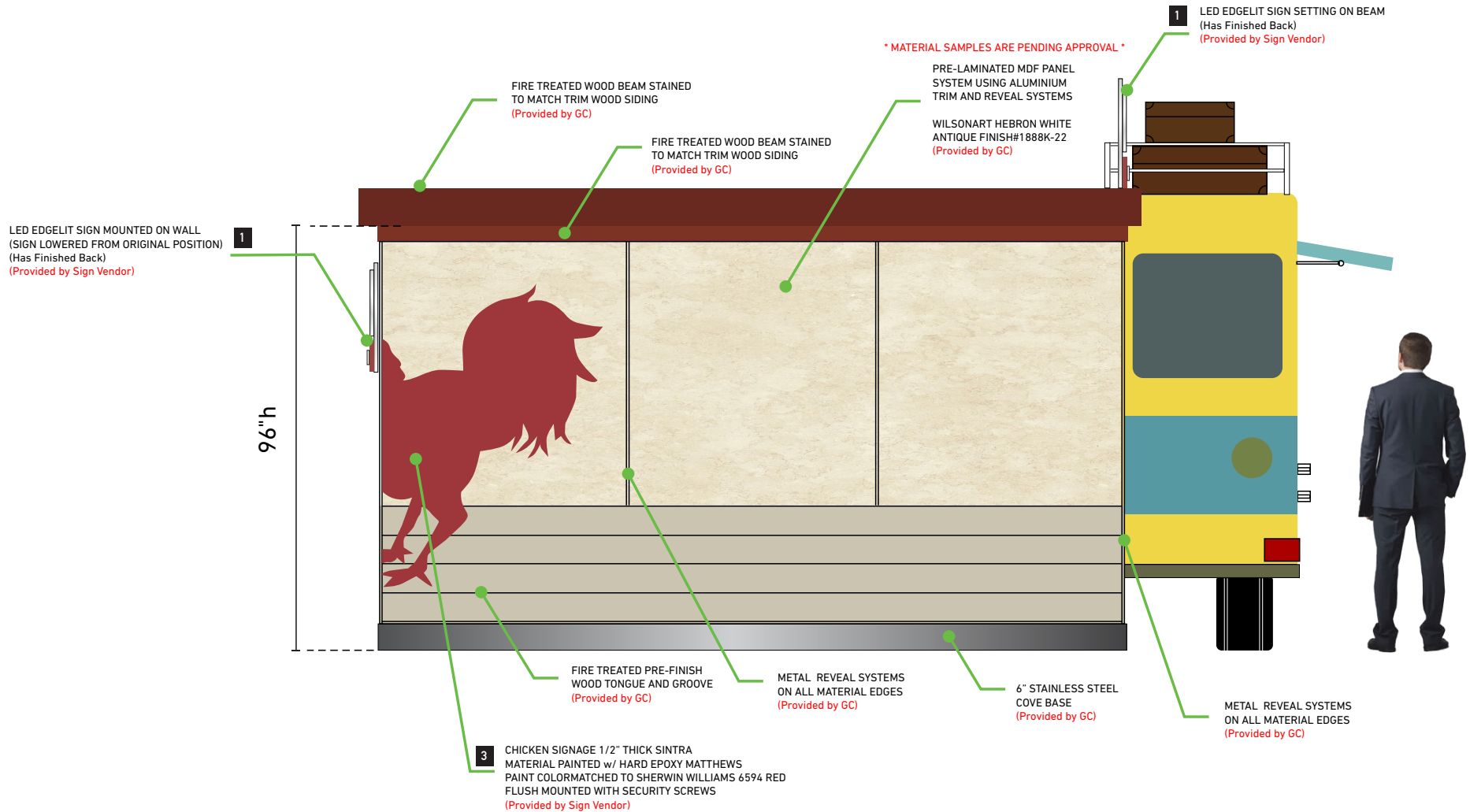
****NO weeps, visible vents or light leaks permitted****



LA CHIVA Logo Sign

Interior - Side Elevation 1

****NO weeps, visible vents or light leaks permitted****

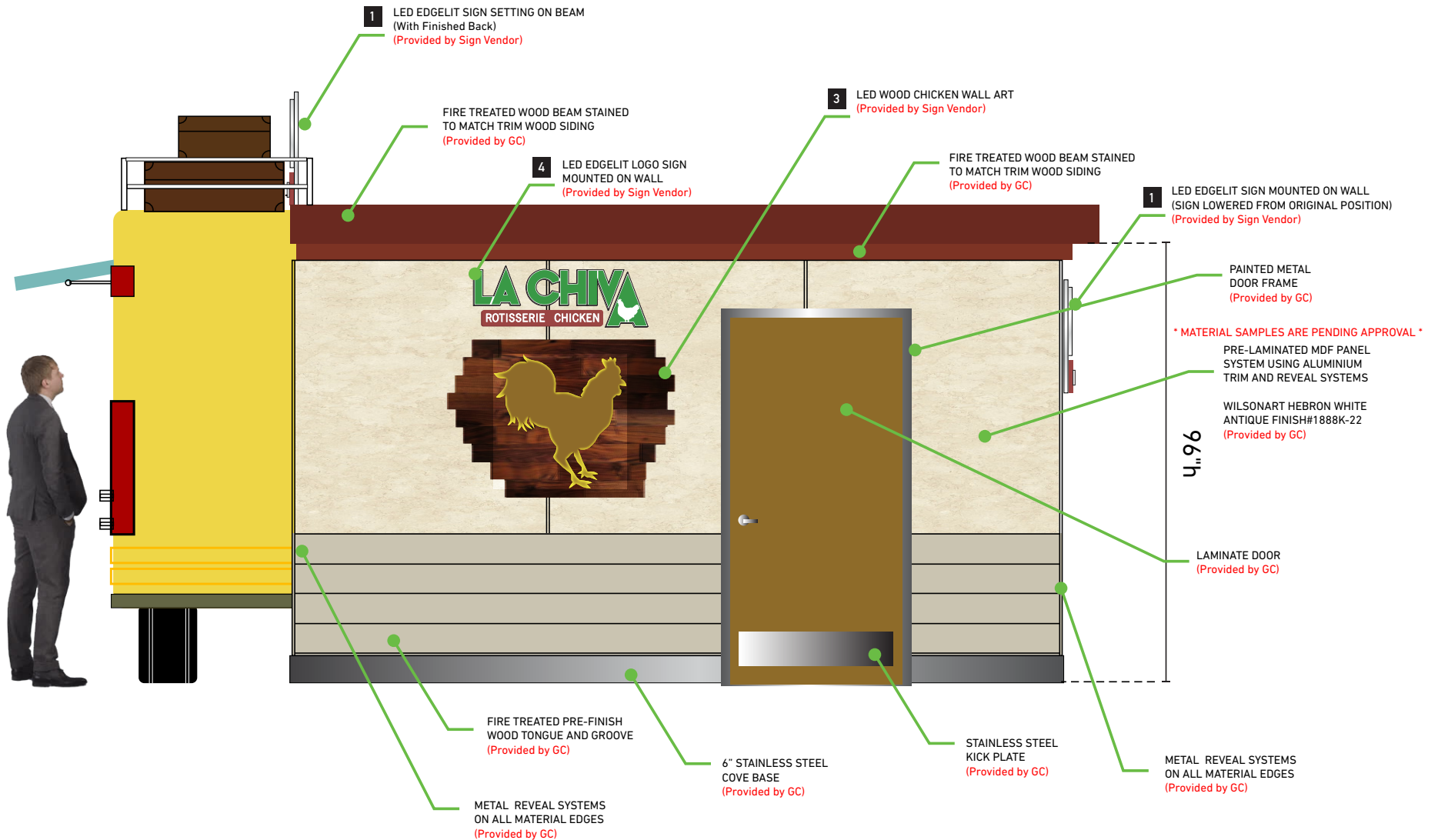


LA CHIVA Logo Sign

Interior - Side Elevation 2

****NO weeps, visible vents or light leaks permitted****

****Material Samples Pending Approval****



LA CHIVA Logo Storefront Sign

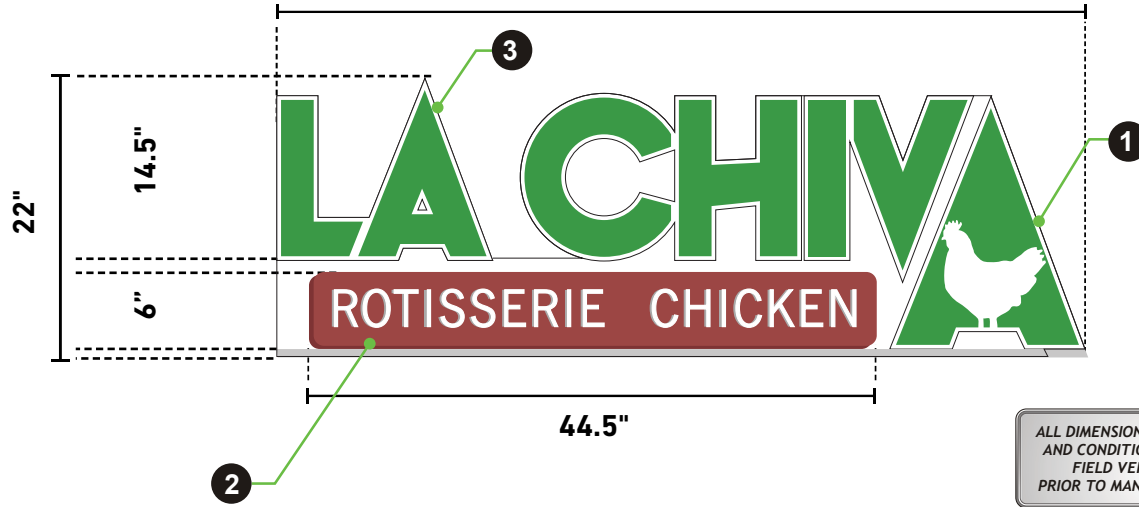
Interior - LED Illuminated

Item# 1

****NO weeps, visible vents or light leaks permitted****

FRONT

64.25"



ALL DIMENSIONS, ACCESS,
AND CONDITIONS TO BE
FIELD VERIFIED
PRIOR TO MANUFACTURE



SIDE

1.5"

1/2"

1/2"

1/2"

1/4"

2

1

4

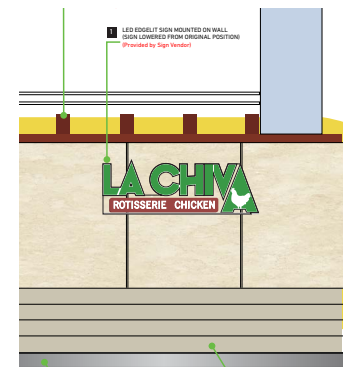
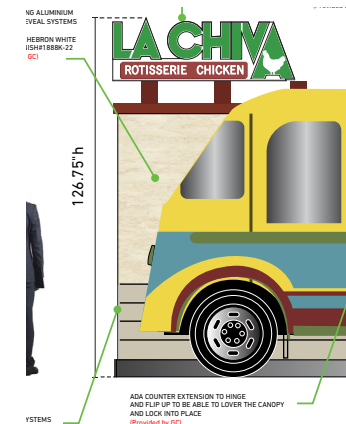
5

1 LED ILLUMINATED EDGE-LIT LA CHIVA LOGO STOREFRONT SIGN (QTY: 2)

- 1.) 1/2" Clear LED Illuminated Edge-Lit Letters w/ Trans Green & Trans White Vinyl (Not a Box Sign)
- 2.) 1/2" Non-Illuminated Colormatch Painted Panel w/ 1/4" White Plex Letters
- 3.) 1/2" Non-Illuminated Frosted Plexiglas w/ Finished Back
- 4.) Mounting Structure
- 5.) 10' Electrical Lead Wire (Shielded) - ****When Installed, Wire Should Not Visible to Public****

FRONT ELEVATION

BACK ELEVATION



LA CHIVA Logo Storefront Sign

Interior - Installation Instructions

Item# 1

****NO weeps, visible vents or light leaks permitted****

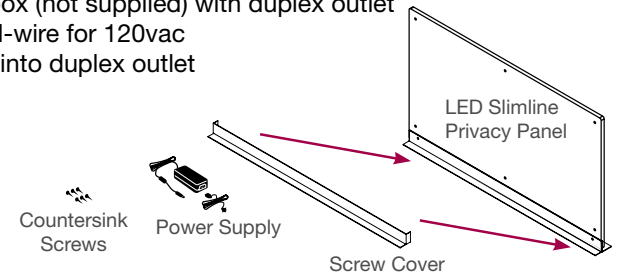
A

**** Refer these instructions to a licensed electrician for installation ****

- 1.) Determine privacy panel location
- 2.) Place privacy panel in position
- 3.) Mark locations of mounting holes and power lead
- 4.) Remove privacy panel
- 5.) Pre-drill holes in counter for supplied mounting screws
- 6.) Drill pass-thru hole for power lead
- 7.) Clean mounting surface
- 8.) Insert power lead through pre-drilled hole
- 9.) Place privacy panel in position

B

- 10.) Attach privacy panel to counter with supplied mounting screws
- 11.) Remove protective film from adhesive dots on screw cover and press into place onto front of privacy panel
- 12.) Mount the power supply in the counter
- 13.) Attach power supply leads to privacy panel leads
- 14.) Mount electrical j-box (not supplied) with duplex outlet in counter and hard-wire for 120vac
- 15.) Plug power supply into duplex outlet



For Proper Installation

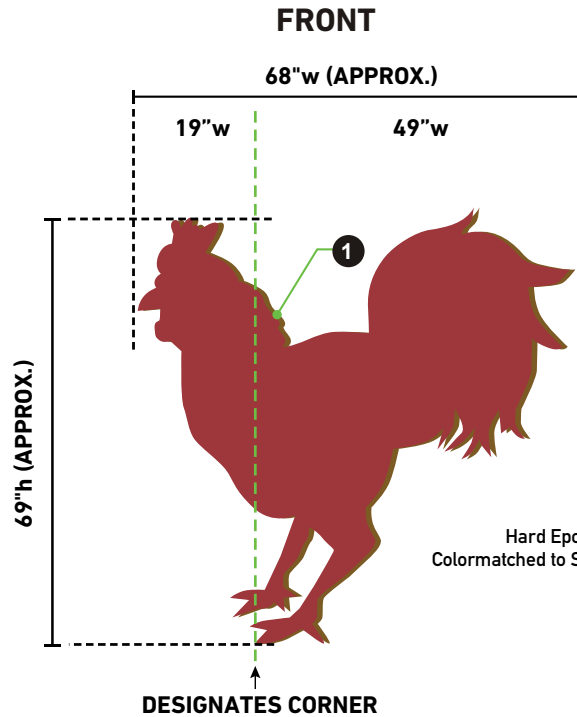
All holes for mounting screws must be used when installing privacy panel.

This product must be installed on a durable, secure counter top. Pressboard is inadequate for proper installation. Mounting screws installed in pressboard may give away under stress.

PVC Corner Chicken Wall Art

Interior - Non-Illuminated

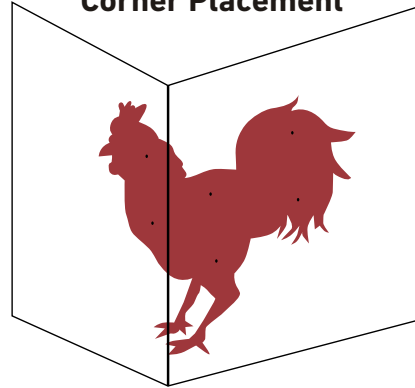
Item# 2



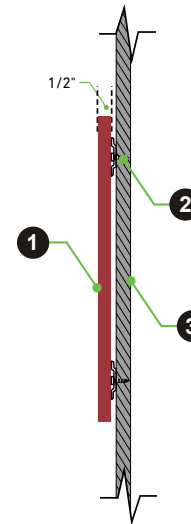
Hard Epoxy MATTHEWS paint
Colormatched to SHERWIN WILLIAMS 6594 RED



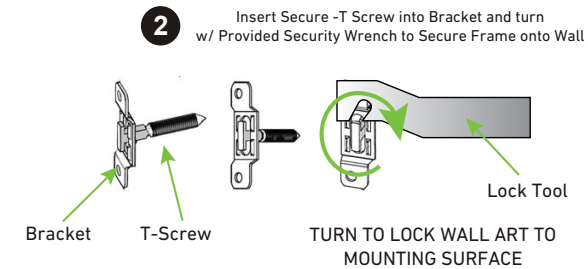
**Example of
Corner Placement**



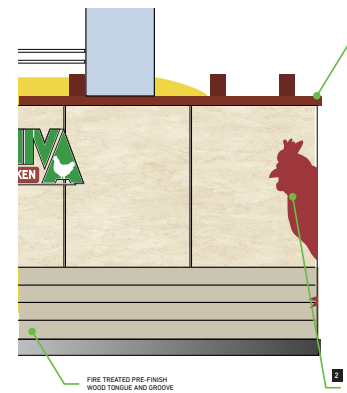
SIDE



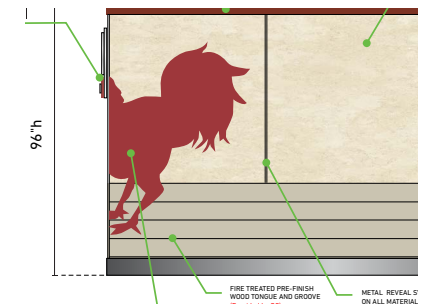
DETAIL



BACK ELEVATION



SIDE 1 ELEVATION



2 NON ILLUMINATED PVC CORNER CHICKEN WALL ART (QTY: 1)

- 1/2" SINTRA w/ Hard Epoxy MATTHEWS paint Colormatched to SHERWIN WILLIAMS 6594 RED
- Mounted to Wall Surface with T-Security Screws
- Wall Surface

ALL DIMENSIONS, ACCESS,
AND CONDITIONS TO BE
FIELD VERIFIED
PRIOR TO MANUFACTURE

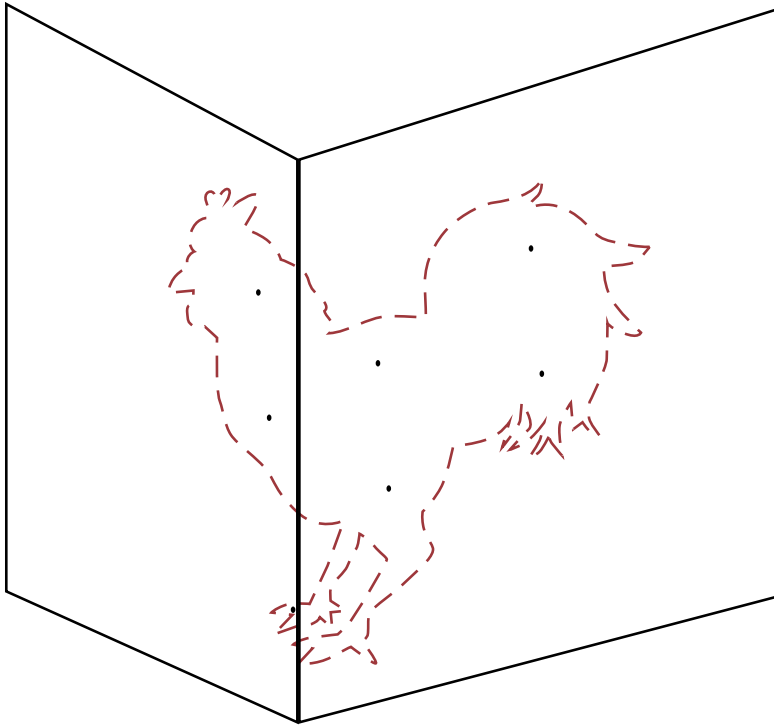
PVC Artwork Install Instructions

Interior - Non-Illuminated

Item# 2

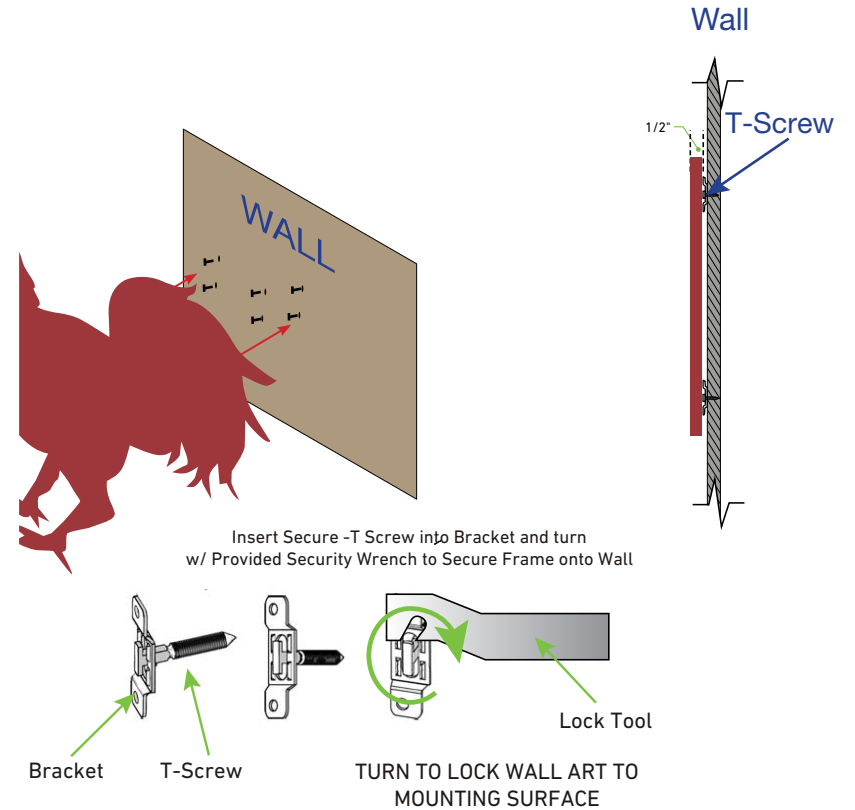
A

- 1.) Determine artwork location
- 2.) Use provided template for to position and pre-drill holes for Security T-Screws.



B

- 3.) Place T-Screws into pre-drilled holes.
- 4.) Hang wall by inserting T-Screw on Wall into Bracket on back of Wall Art.
- 5.) Use Lock Tool to turn T-Screw to lock Wall Art into place.



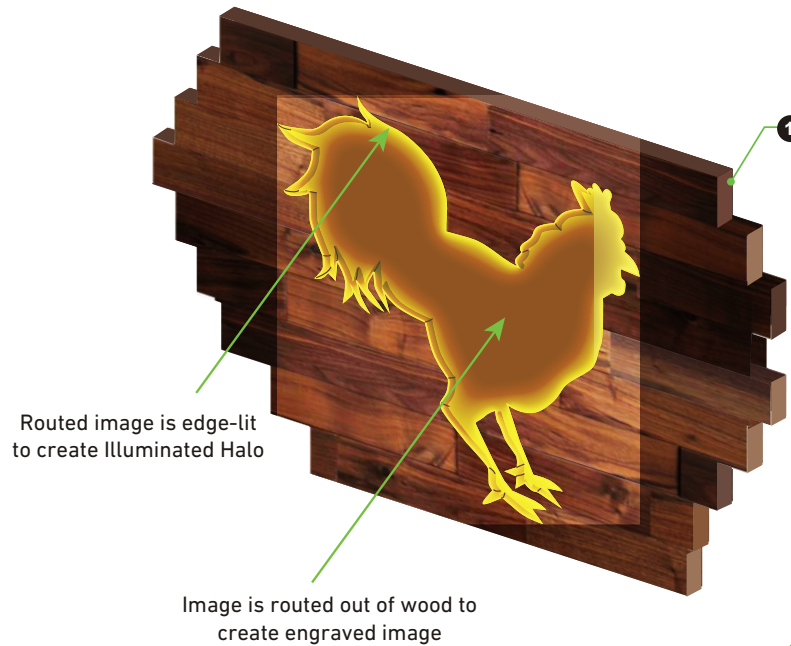
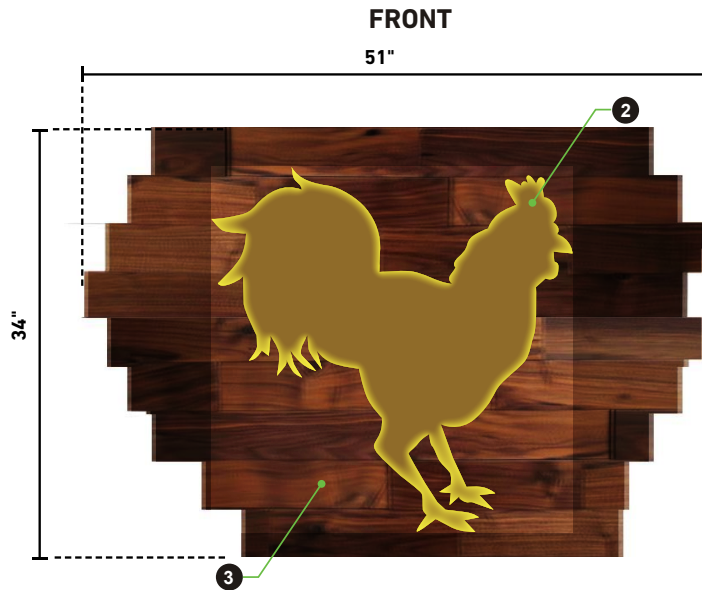
Wood Chicken Wall Art

Interior - LED Illuminated

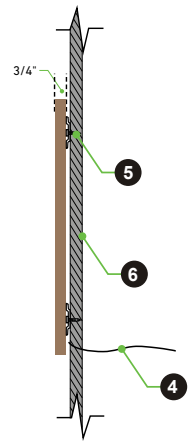
Item# 3

****NO weeps, visible vents or light leaks permitted****

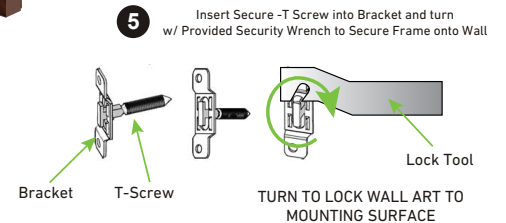
****Material Samples Pending Approval****



SIDE



DETAIL



3 LED ILLUMINATED WOOD CHICKEN WALL ART (QTY: 1)

- 1.) 1/2" thick New Wood Slats
- 2.) 1/4" Cut-out Image with Colormatch Painted PVC backer.
- 3.) LED Inner Halo Glow w/ Yellow color LEDs
- 4.) 10' Electrical Lead Wire (Shielded)
- 5.) Mounted to Wall Surface with T-Security Screws
- 6.) Wall Surface

ALL DIMENSIONS, ACCESS,
AND CONDITIONS TO
BE FIELD VERIFIED
PRIOR TO MANUFACTURE

SIDE 2 ELEVATION



LED Chicken Artwork Install Instructions

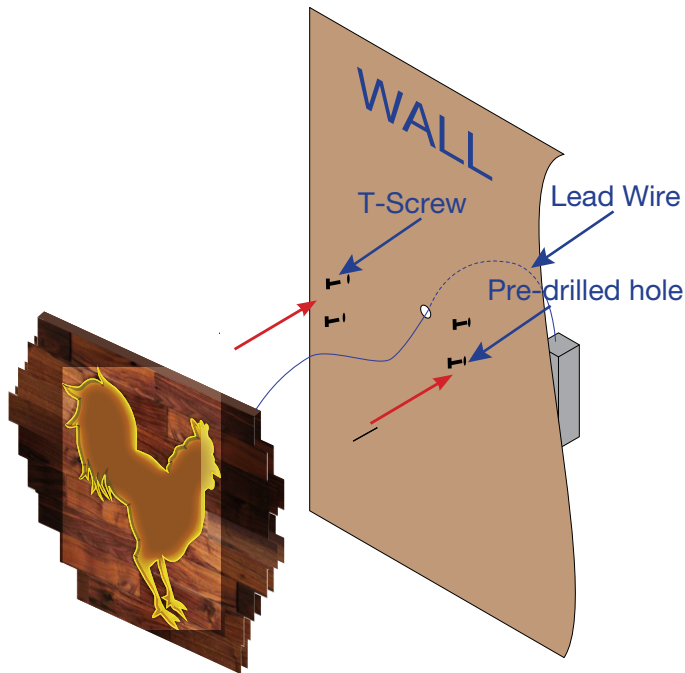
Interior - Non-Illuminated

Item# 3

****NO weeps, visible vents or light leaks permitted****

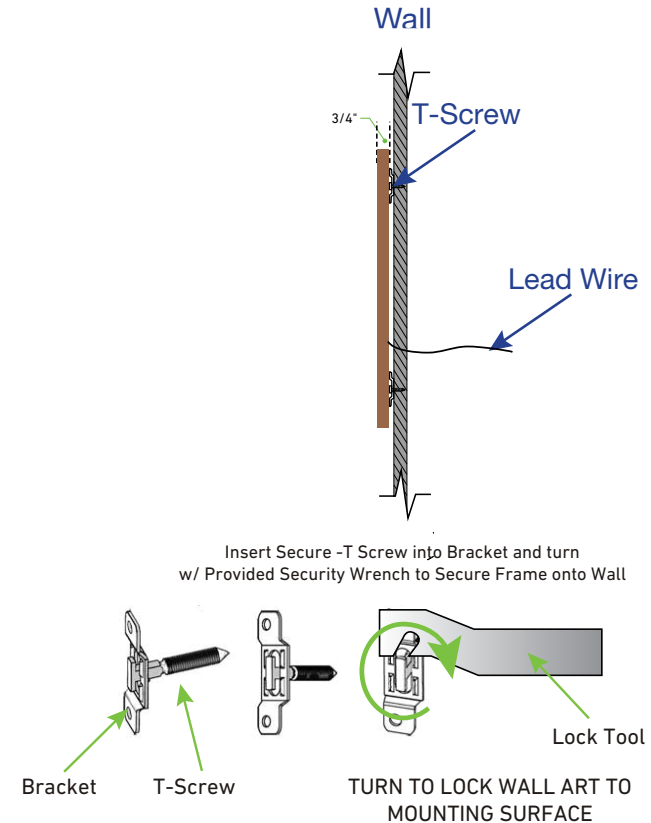
A

- 1.) Determine artwork location
- 2.) Use provided template for to position and pre-drill holes for Security T-Screws.
- 3.) Feed Lead Wire through drilled hole to attach to remote power supply.



B

- 3.) Place T-Screws into pre-drilled holes.
- 4.) Hang wall by inserting T-Screw on Wall into Bracket on back of Wall Art.
- 5.) Use Lock Tool to turn T-Screw to lock Wall Art into place.



LA CHIVA Logo Sign

Interior - LED Illuminated

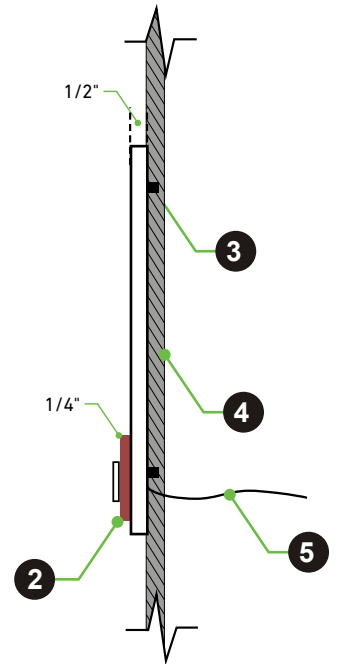
Item# 4

****NO weeps, visible vents or light leaks permitted****

FRONT
37"



SIDE



SIDE 2 ELEVATION



4

LED ILLUMINATED LA CHIVA LOGO SIGN (QTY: 1)

(NON-ILLUMINATED OPTION AVAILABLE)

- 1.) 1/2" Clear LED Illuminated Letters w/ Trans Green & Trans White Vinyl
- 2.) 1/4" Non-Illuminated Colormatch Painted Panel w/ 1/4" White Plex Letters
- 3.) Mounting Pins
- 4.) Wall Surface
- 5.) 10' Electrical Lead Wire (Shielded)

LED Edge-Lit Logo Signage

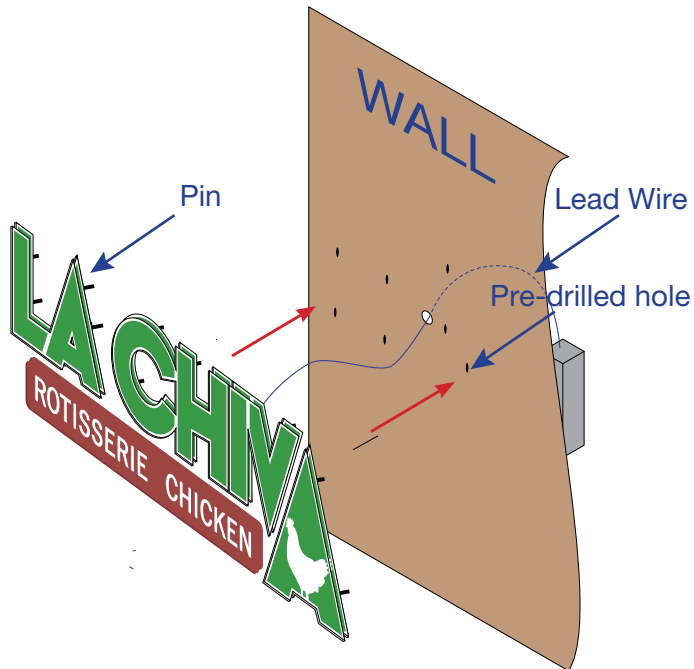
Interior - Installation Instructions

Item# 4

****NO weeps, visible vents or light leaks permitted****

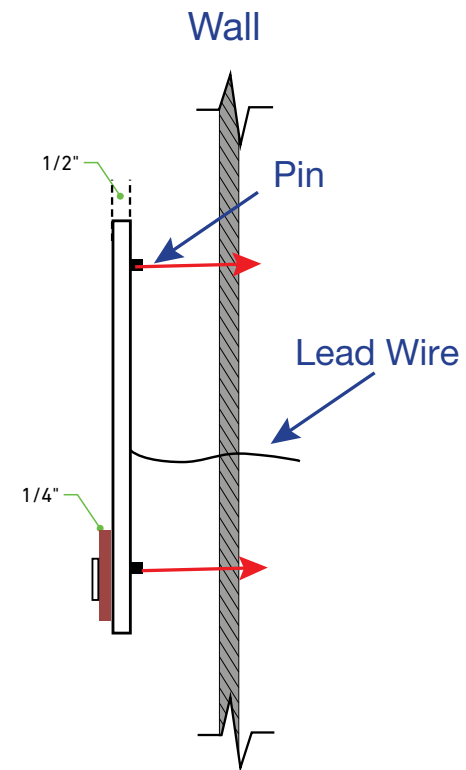
A

- 1.) Determine artwork location
- 2.) Use provided template for to position and pre-drill holes for pin-mounted holes. Use silicone adhesive in the pre-drilled holes before placing signage into pin holes.
- 3.) Feed Lead Wire through drilled hole to attach to remote power supply.



B

- 4.) Line up pins on back of Edge-lit signage section into pre-drilled holes.
- 5.) Insert pins into pre-drilled hole in Wall.



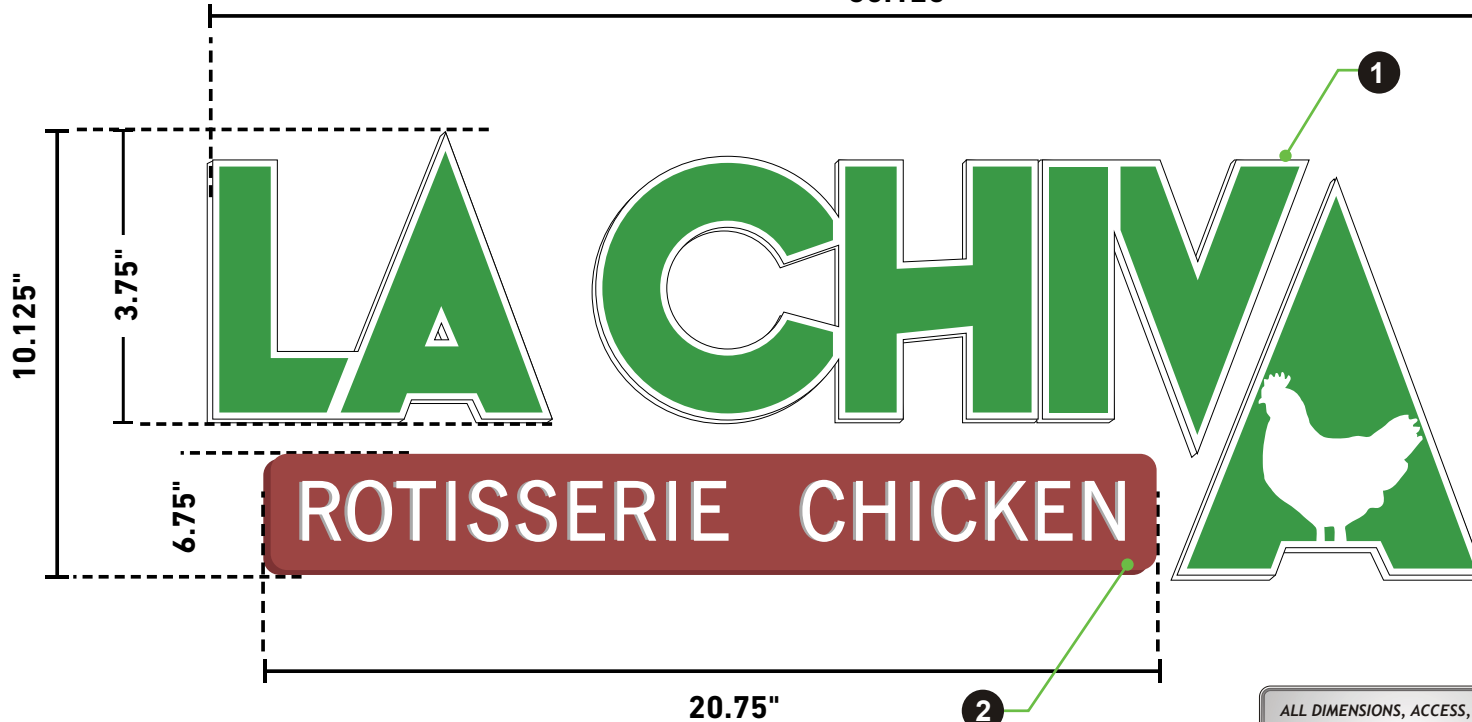
LA CHIVA Logo Sign

Interior - Non-Illuminated

Item# 5

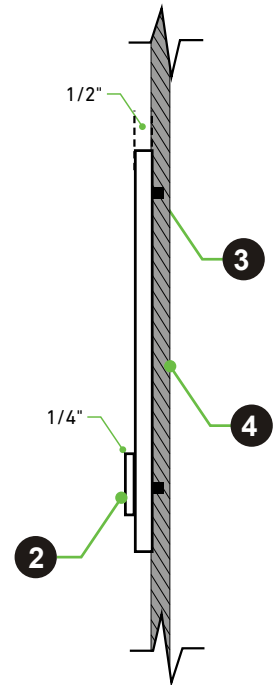
FRONT

30.125"



ALL DIMENSIONS, ACCESS,
AND CONDITIONS TO BE
FIELD VERIFIED
PRIOR TO MANUFACTURE

SIDE



LOCATION

5

NON ILLUMINATED LA CHIVA LOGO SIGN (QTY: 1)

- 1.) 1/2" White Plexiglas Non Illuminated Letters w/ Green Vinyl
- 2.) 1/2" Non-Illuminated Colormatch Painted Panel w/ 1/4" White Plex Letters
- 3.) Mounting Pins
- 4.) Wall Surface

SIDE 2 ELEVATION



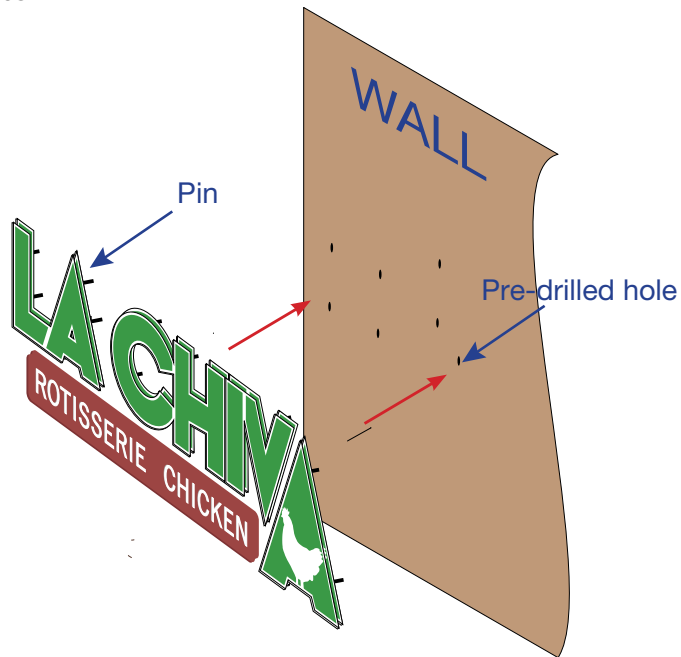
Non-Illuminated Logo Signage

Interior - Installation Instructions

Item# 5

A

- 1.) Determine artwork location
- 2.) Use provided template for to position and pre-drill holes for pin-mounted holes.
- 3.) Use silicone adhesive in the pre-drilled holes before placing signage into pin holes.



B

- 4.) Line up pins on back of Non-Illuminated signage section into pre-drilled holes.
- 5.) Insert pins into pre-drilled hole in Wall.

