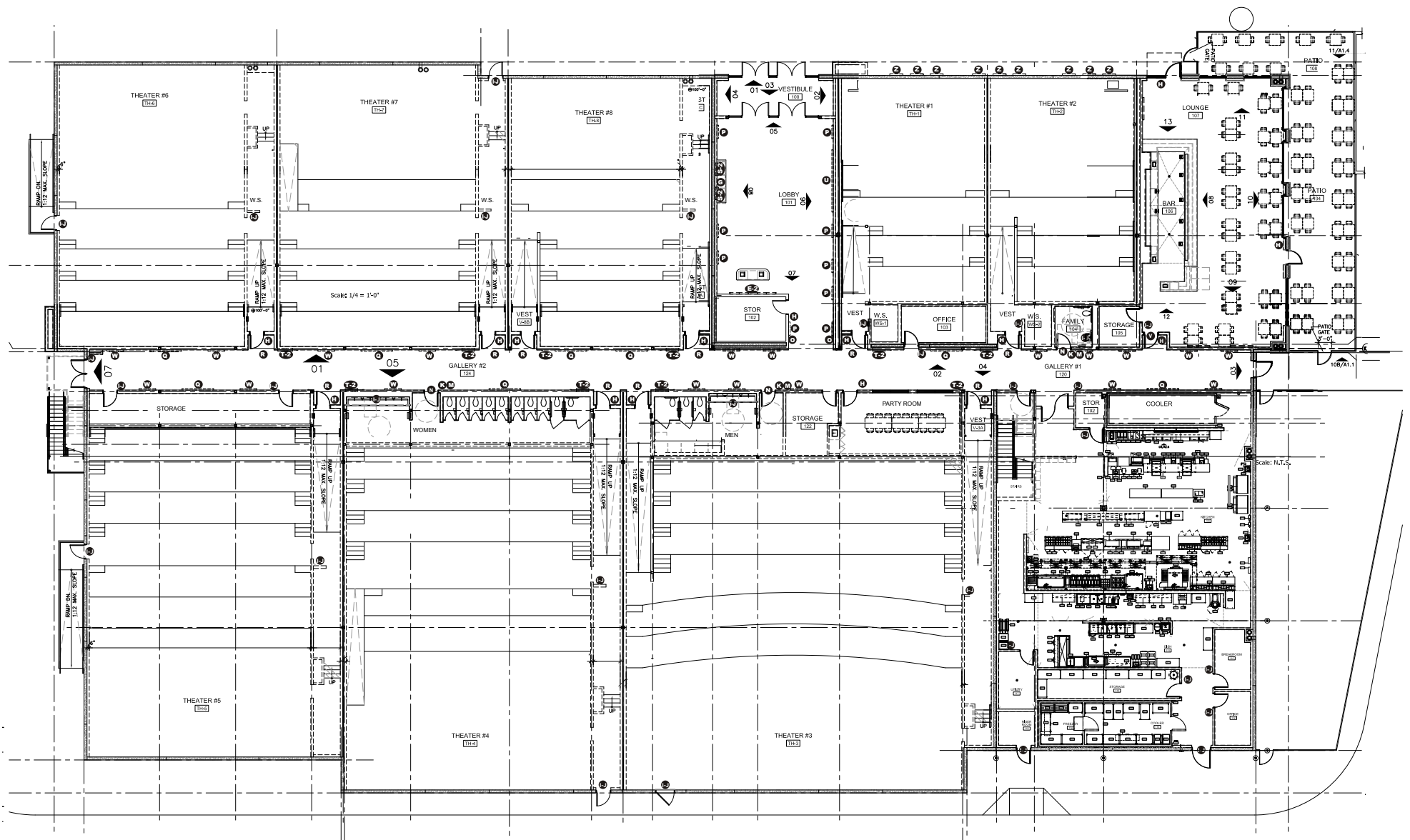




**NORTH RICHLAND HILLS, TX**  
INTERIOR SIGNAGE PACKAGE - 01.28.19

ITEM		DETAILS
D	Light Bulb Ticket Letters	LED ILLUMINATED
E-2	Chalkboard Option Ticket Montitor Surround	NON-ILLUMINATED
G	Tickets Letters	NON-ILLUMINATED
H	ADA Occupancy Plaques	NON-ILLUMINATED
I-J	ADA Identifier Plaques	NON-ILLUMINATED
K	Restroom ADA Plaques	NON-ILLUMINATED
M	Restroom Identifier	LED ILLUMINATED
N	Restroom Letters	NON-ILLUMINATED
O	Neon Directional Identifier Sign	LED ILLUMINATED
P	Mondo Poster Frame	NON-ILLUMINATED
Q	6-Sheet Poster Frame	NON-ILLUMINATED
R	Auditorium Identifier	LED ILLUMINATED
S-2	Chalkboard Option Light Bulb Surround	LED ILLUMINATED
T-2	Chalkboard Option Poster Surround	NON-ILLUMINATED
U	Fabric Light Box Sign	LED ILLUMINATED
V	Neon Bar Sign	LED ILLUMINATED
W	3-Sheet Poster Frames	NON-ILLUMINATED
Z	2nd Layer Poster Case 4" Deep	LED ILLUMINATED

VERSION - 01.28.19

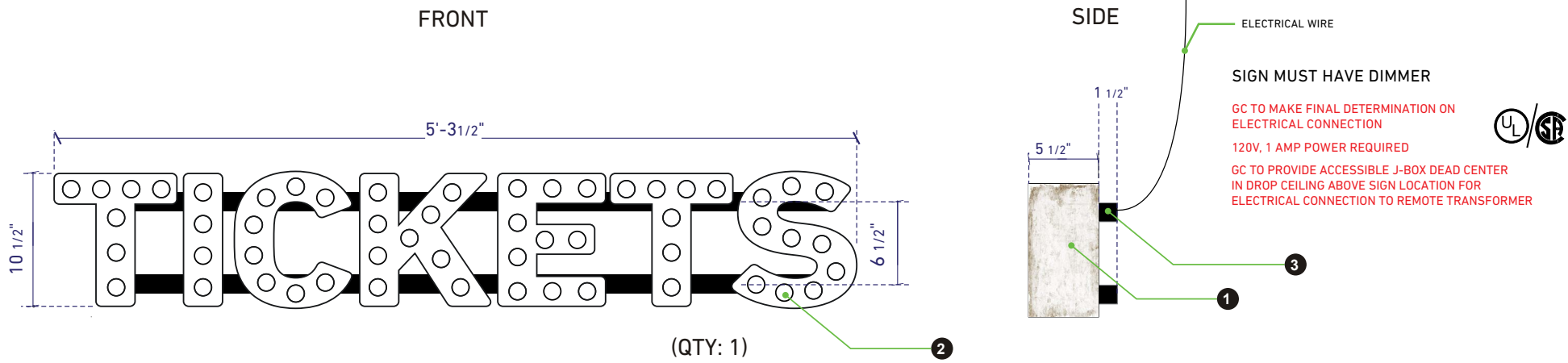


ALAMO NORTH RICHLAND HILLS, TX - FLOOR PLAN

# North Richland Hills

## Interior - LED Illuminated Tickets Letters

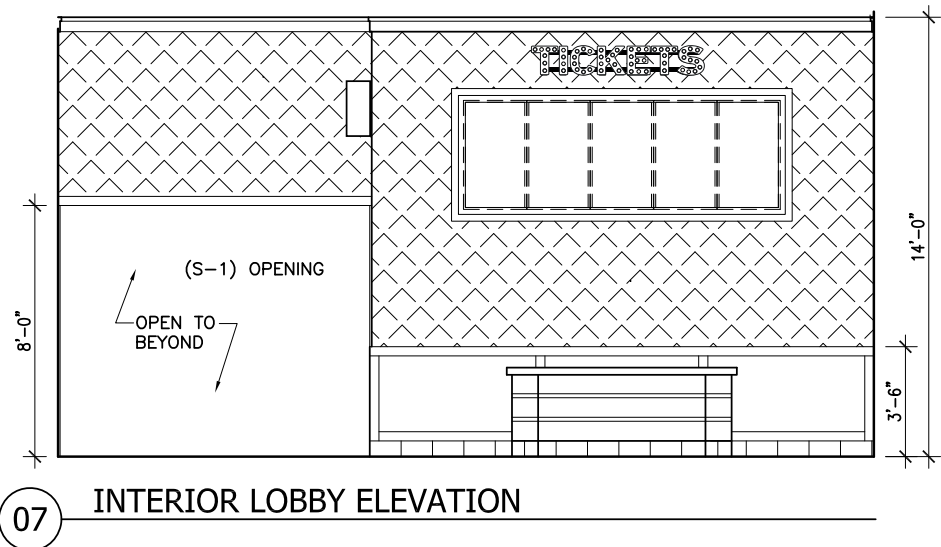
Item# D



**D** LED ILLUMINATED TICKETS OPEN-FACED CHANNEL LETTERS

1. 5 1/2" Deep Open-faced Channel Letters, Painted White MP# 42202SP w/ Faux 'Vintage' Finish
2. Gold Tint Led Filament Bulb (SUPER BRIGHT LEDS #G16D-UW46F)
3. Tube Frame, Painted 'Black' MP# N293SP

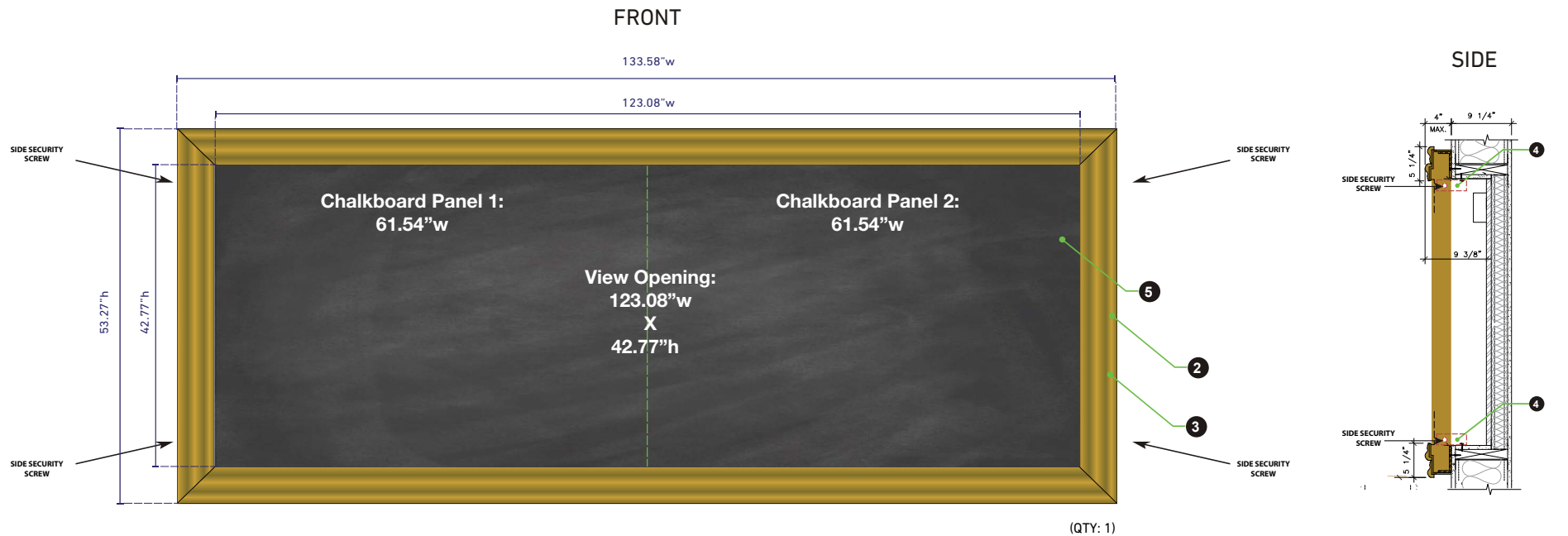
ALL DIMENSIONS, ACCESS,  
AND CONDITIONS TO BE  
FIELD VERIFIED  
PRIOR TO MANUFACTURE



# North Richland Hills

## Interior - Non-Illuminated Chalkboard Option Ticket Monitor Surround

### Item# E-2

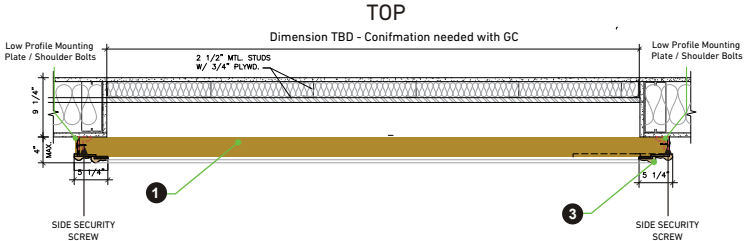
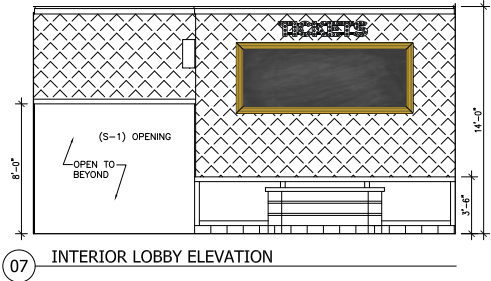


Built to specifications of NEC V484 Display  
Must confirm specifications with architect before fabrication

#### E CHALKBOARD OPTION FOR NON-ILLUMINATED TICKETS MONITORS SURROUND

1. Fabricated Aluminum Frame
2. Sintra Frame With Outwater Plastics TRIM PART# RPS-0492-07
3. All Exposed Surfaces Painted MP#21962, 'Plaque Gold Metallic' W/ Faux 'Vintage' Finish
4. Side Security Screws - Attach to hidden side mounting metal brackets
5. Chalkboard Panels (2) - Detachable so monitors can be replaced if needed

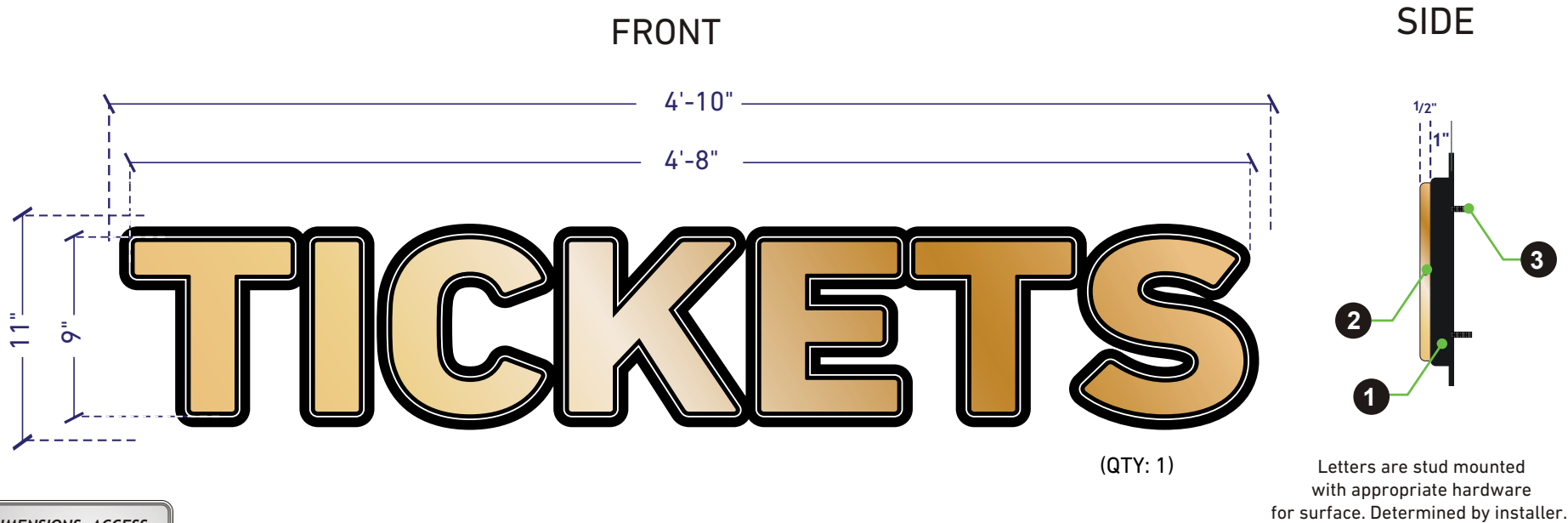
ALL DIMENSIONS, ACCESS,  
AND CONDITIONS TO BE  
FIELD VERIFIED  
PRIOR TO MANUFACTURE



# North Richland Hills

## Interior - Non-Illuminated Tickets Letters

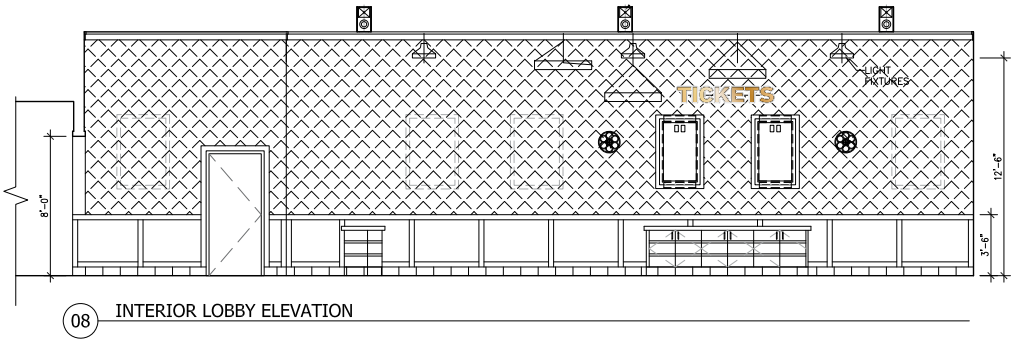
Item# G



ALL DIMENSIONS, ACCESS, CONDITIONS TO BE FIELD VERIFIED PRIOR TO MANUFACTURE

### G NON-ILLUMINATED TICKETS LETTERS

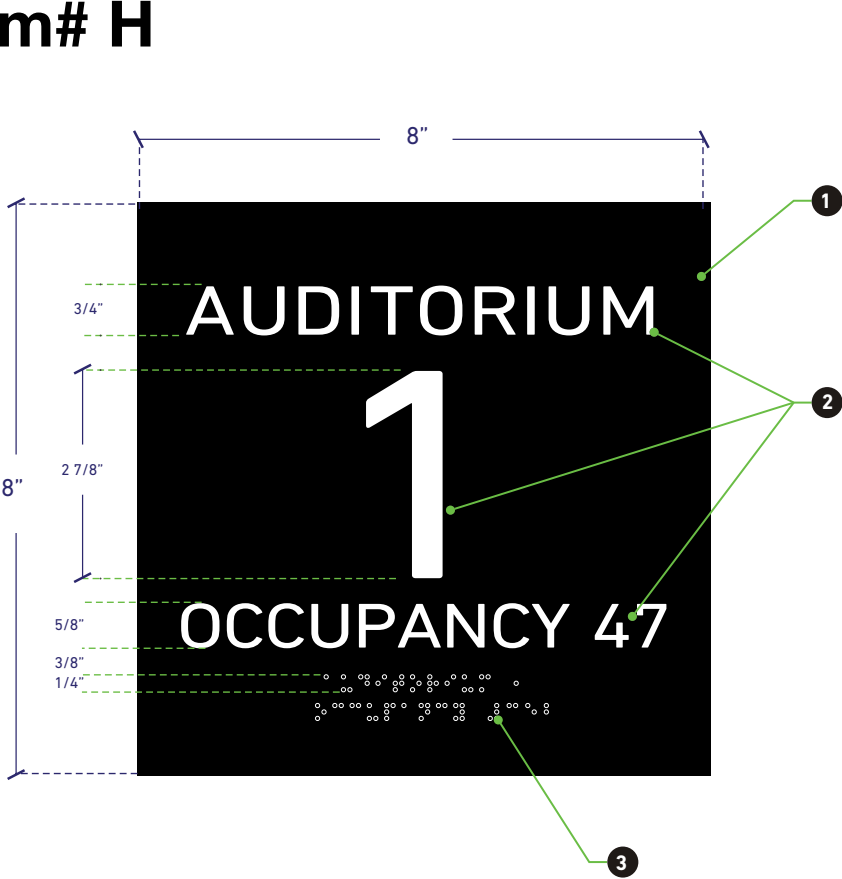
1. 1" Thick Sintra With 1/4" Fillet Edge, Painted 'Black' Mp# N293sp
2. 1/2" Thick Sintra With 1/4" Fillet Edge, Painted Mp#21962, 'plaque Gold Metallic' W/ Faux 'Vintage' Finish
3. Stud Mounted Flush To Wall Surface



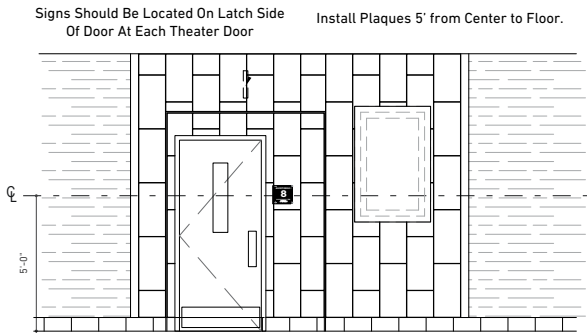
# North Richland Hills

## Interior - Non-Illuminated ADA Occupancy Plaques

### Item# H



SIDE



Plaques are flush mounted to surface with Silicone Adhesive and VHB Tape

#### H NON-ILLUMINATED ADA OCCUPANCY PLAQUES

1. 1/4" Thick Black Acrylic
2. 'BRIGHT WHITE' Gravotac Tactile Copy
3. Clear Grade II Braille

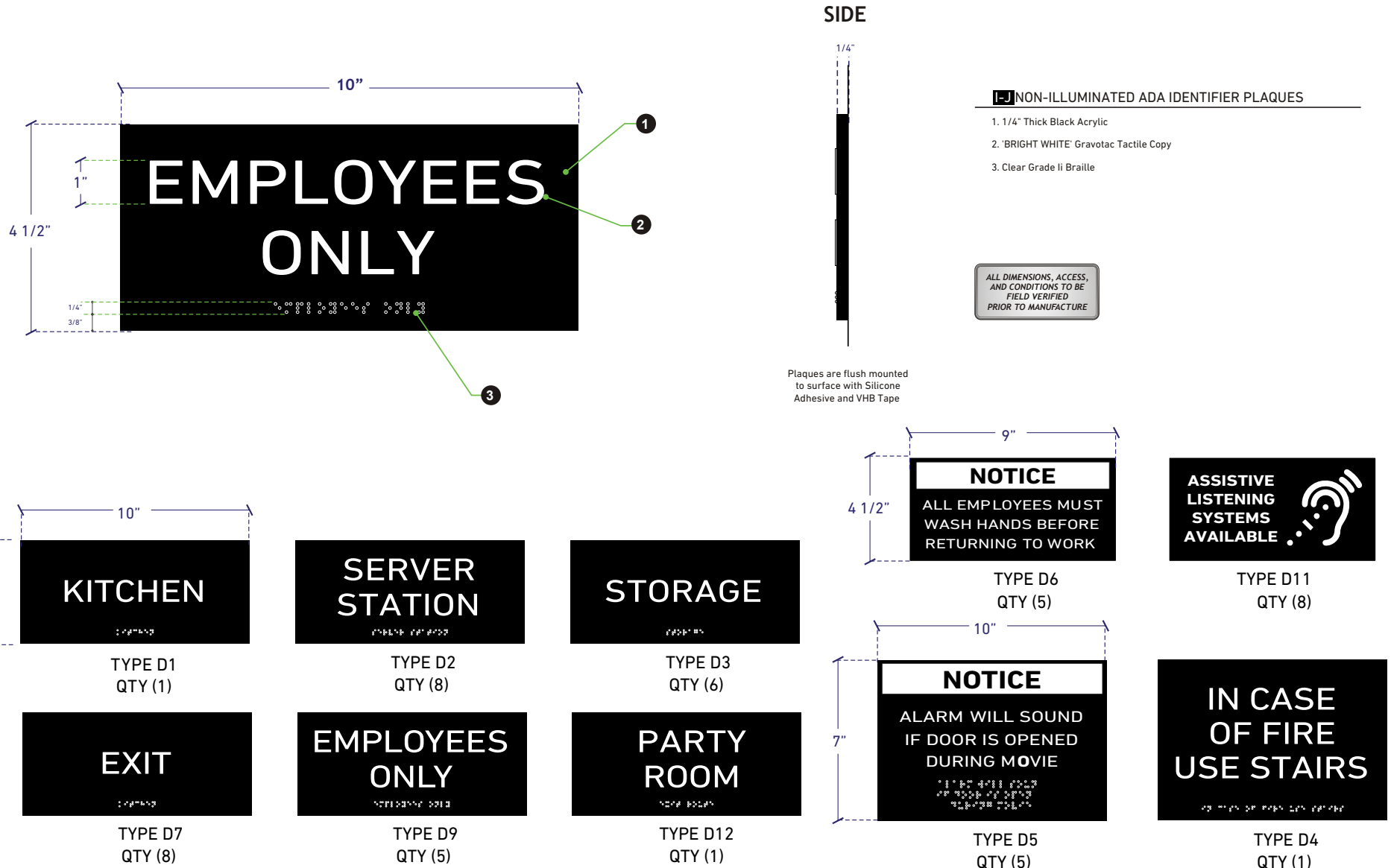
AUDITORIUM <b>1</b> OCCUPANCY 47 <small>(QTY: 1)</small>	AUDITORIUM <b>2</b> OCCUPANCY 47 <small>(QTY: 1)</small>	AUDITORIUM <b>3</b> OCCUPANCY 240 <small>(QTY: 2)</small>	AUDITORIUM <b>4</b> OCCUPANCY 169 <small>(QTY: 1)</small>	<small>ALL DIMENSIONS, ACCESS, AND CONDITIONS TO BE FIELD VERIFIED PRIOR TO MANUFACTURE</small>		
AUDITORIUM <b>5</b> OCCUPANCY 159 <small>(QTY: 1)</small>	AUDITORIUM <b>6</b> OCCUPANCY 95 <small>(QTY: 1)</small>	AUDITORIUM <b>7</b> OCCUPANCY 98 <small>(QTY: 1)</small>	AUDITORIUM <b>8</b> OCCUPANCY 72 <small>(QTY: 2)</small>	PATIO OCCUPANCY TBD <small>(QTY: 1)</small>	LOUNGE OCCUPANCY TBD <small>(QTY: 1)</small>	PARTY ROOM OCCUPANCY TBD <small>(QTY: 1)</small>

# North Richland Hills

## Interior - Non-Illuminated ADA Identifier Plaques

Item# I

Item# J

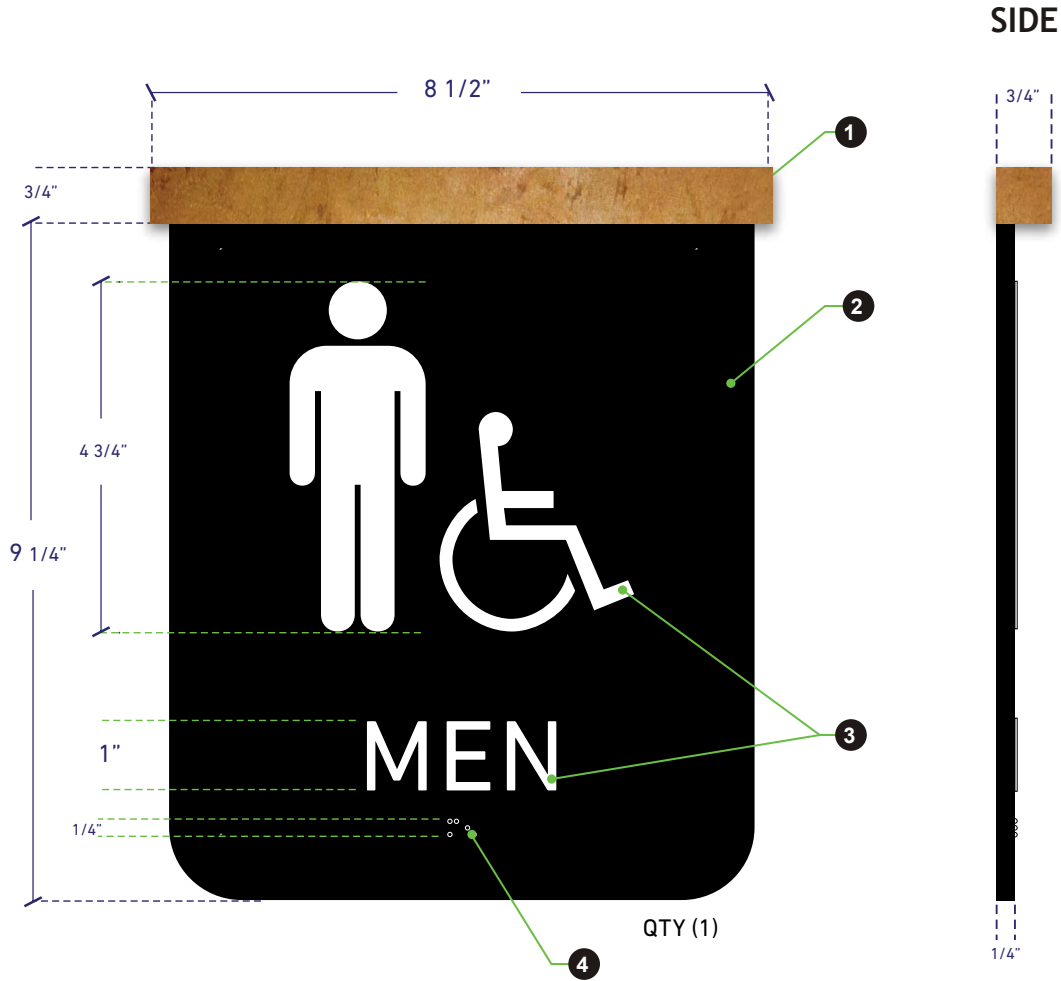




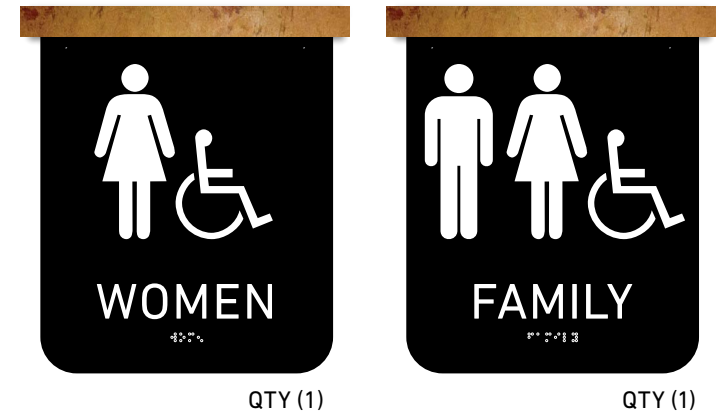
# North Richland Hills

## Interior - Non-Illuminated ADA Restroom Plaques

Item# K



Plaques are mounted with appropriate hardware for surface. Determined by installer.



### K - NON-ILLUMINATED ADA RESTROOM PLAQUES

1. 19MM Sintra Band Painted MP#21962, 'PLAQUE GOLD METALLIC'
2. 1/4" Thick Black Acrylic
3. 'BRIGHT WHITE' Gravotac Tactile Copy
4. Clear Grade II Braille
5. Spanner Head Screws, Paint 'BLACK' MP# N923SP

ALL DIMENSIONS, ACCESS,  
AND CONDITIONS TO BE  
FIELD VERIFIED  
PRIOR TO MANUFACTURE

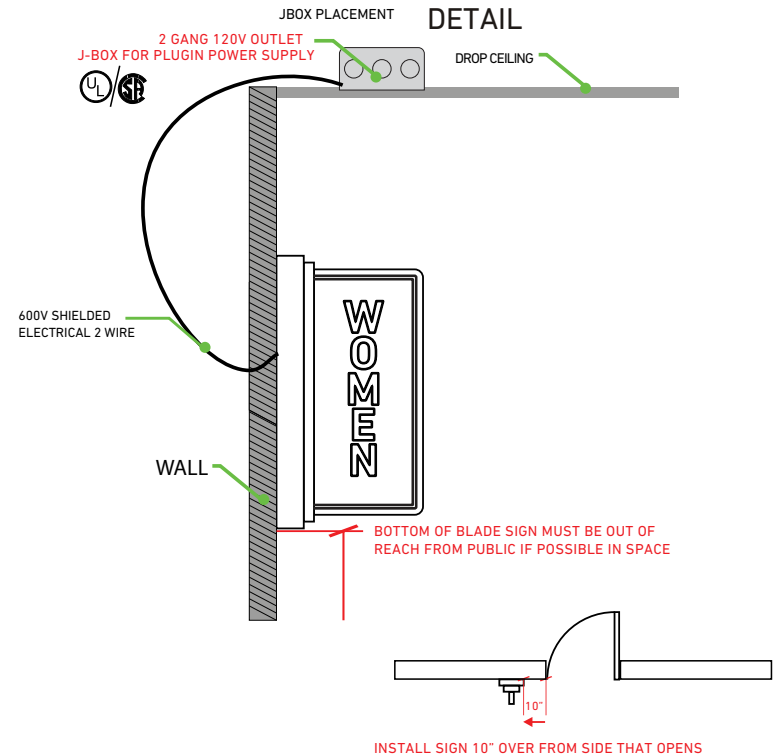
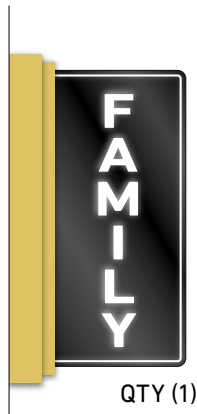
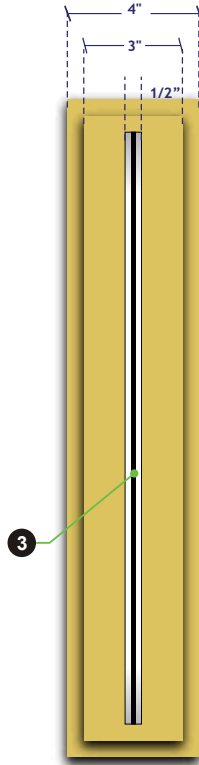
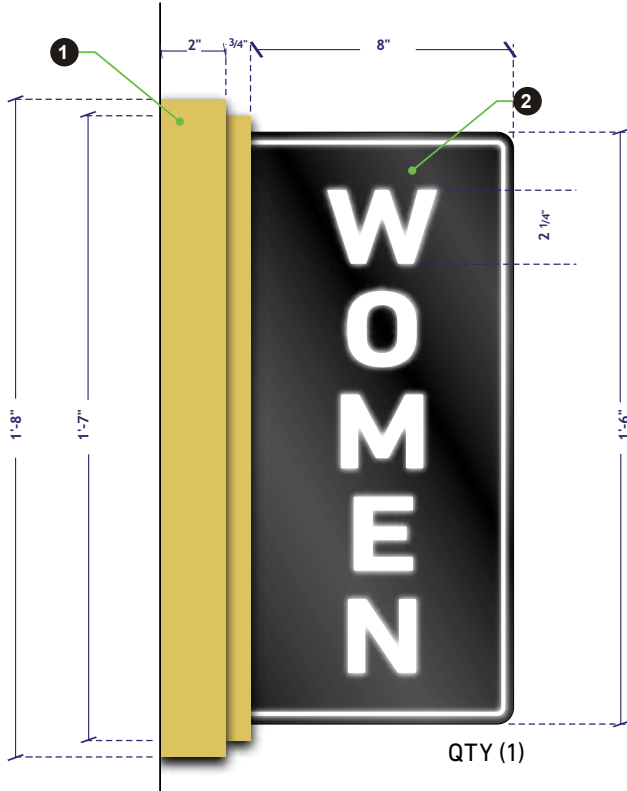
# North Richland Hills

## Interior - LED Illuminated Restroom Identifier Sign

Item# M

SIDE

END



### M LED ILLUMINATED ELEVATOR IDENTIFIER

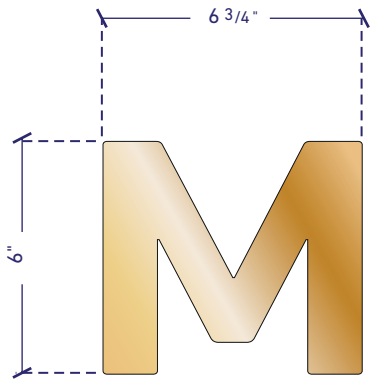
1. Fabricated Bracket, Painted MP#21962, 'Plaque Gold Metallic' W/ Faux 'Vintage' Finish
2. 3/16" Thick Clear Acrylic With Rounded Edge-lit Copy
3. 1/8" Thick Acrylic, Painted 'Black' MP# N293sp, With White Applied Vinyl Graphics

ALL DIMENSIONS, ACCESS,  
AND CONDITIONS TO BE  
FIELD VERIFIED  
PRIOR TO MANUFACTURE

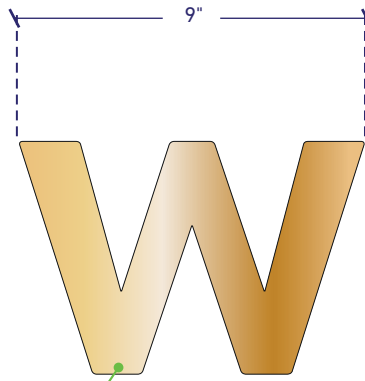
# North Richland Hills

## Interior - Non-Illuminated Restroom Letters

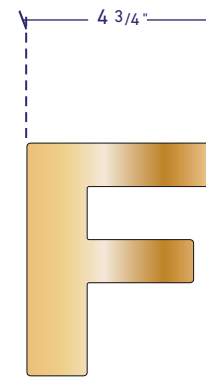
Item# N



QTY (1)

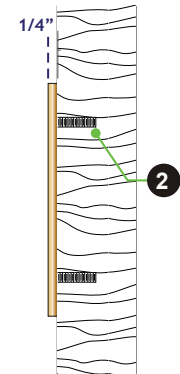


QTY (1)



QTY (1)

SIDE



Plaques are stud mounted with appropriate hardware for surface. Determined by installer.

ALL DIMENSIONS, ACCESS,  
AND CONDITIONS TO BE  
FIELD VERIFIED  
PRIOR TO MANUFACTURE

### **N** NON-ILLUMINATED M, W RESTROOM LETTERS

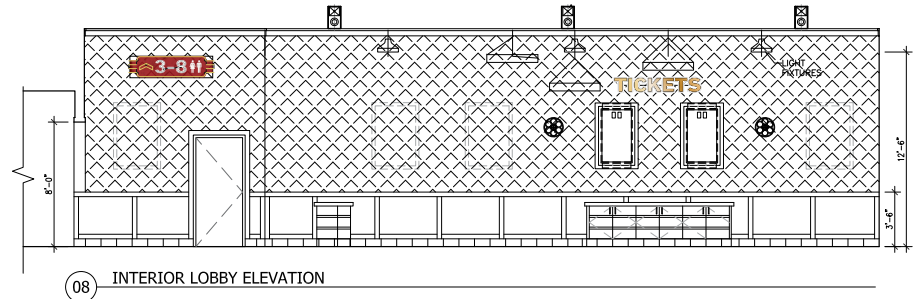
1. 1/4" Thick Fco Brass Letters, Polished Finish.
2. Stud Mounted To Door.

**Item# 0**



1. Fabricated Aluminum Cabinet, Painted MP# 08937, 'Flexi-flyer Red' W/ Faux 'Vintage' Finish
2. Graphics Masked And Painted MP# 42202sp, 'White' W/ Faux 'Vintage' Finish
3. Exposed Gold Neon
4. Exposed White Neon

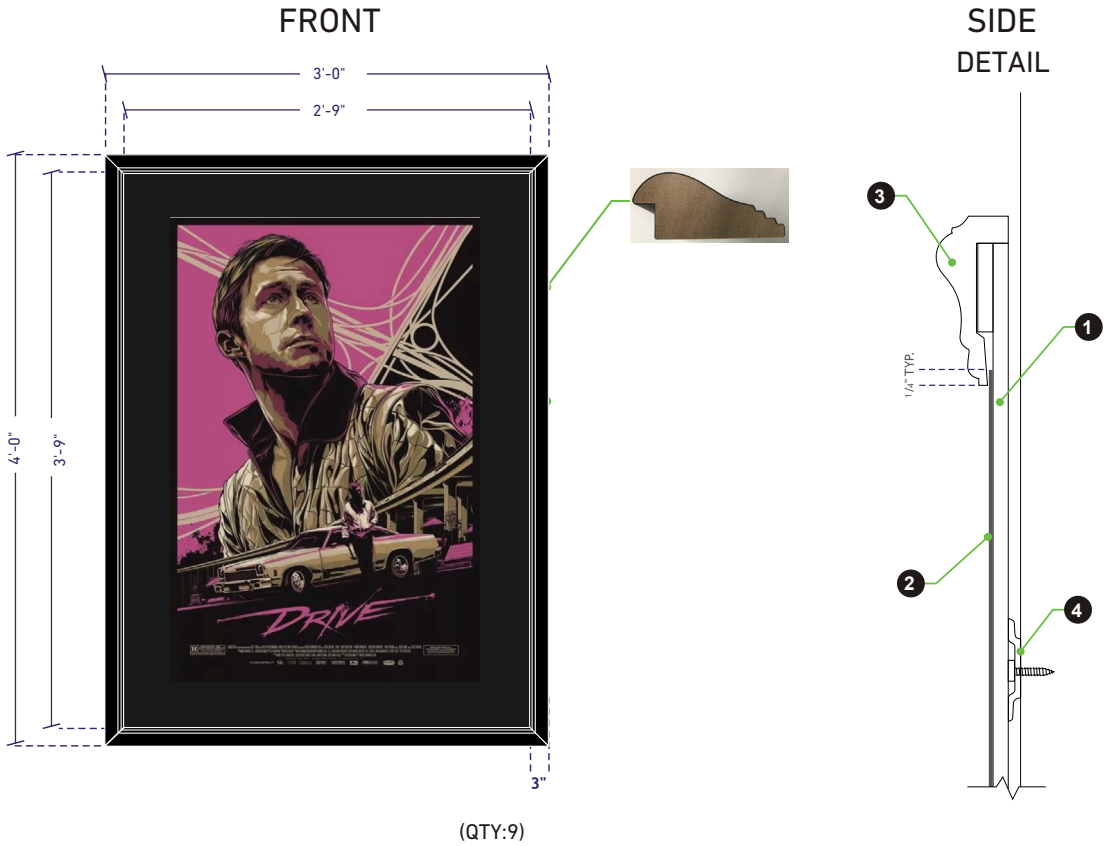
**ALL DIMENSIONS, ACCESS,  
AND CONDITIONS TO BE  
FIELD VERIFIED  
PRIOR TO MANUFACTURE**



# North Richland Hills

## Interior - Non-Illuminated Poster Frame

Item# P

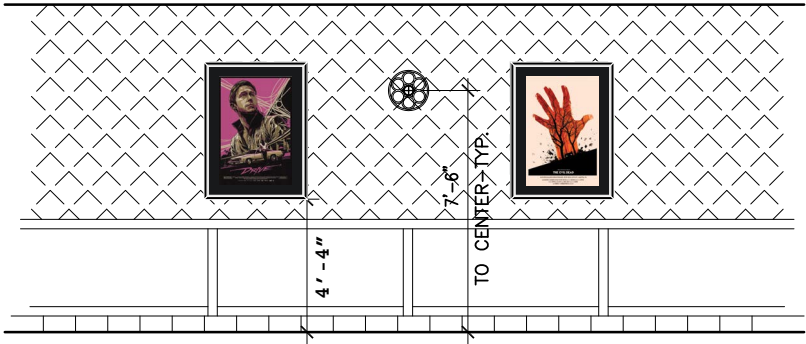
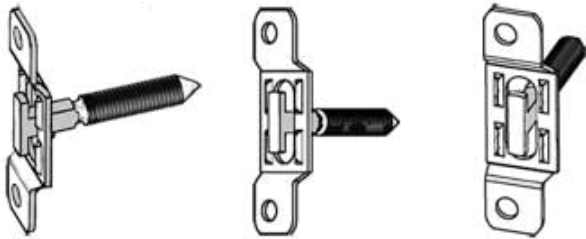


**P** NON-ILLUMINATED SINGLE POSTER FRAME

1. 6MM Sintra Backer
2. Poster To Be Provided By Client, Schult To Mount To Sintra Backer
3. Wood Frame Painted Black Finish
4. To Mount To Wall Surface w/ Security Hardware.

ALL DIMENSIONS, ACCESS,  
AND CONDITIONS TO BE  
FIELD VERIFIED  
PRIOR TO MANUFACTURE

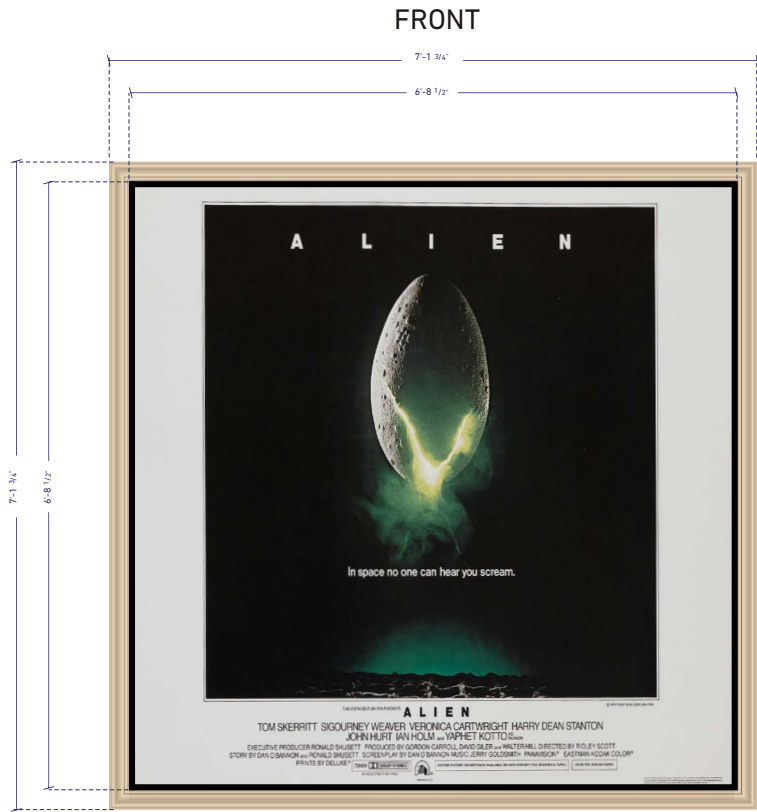
**4** Insert Secure -T Screw into Bracket and turn w/ Provided Security Wrench to Secure Frame onto Wall



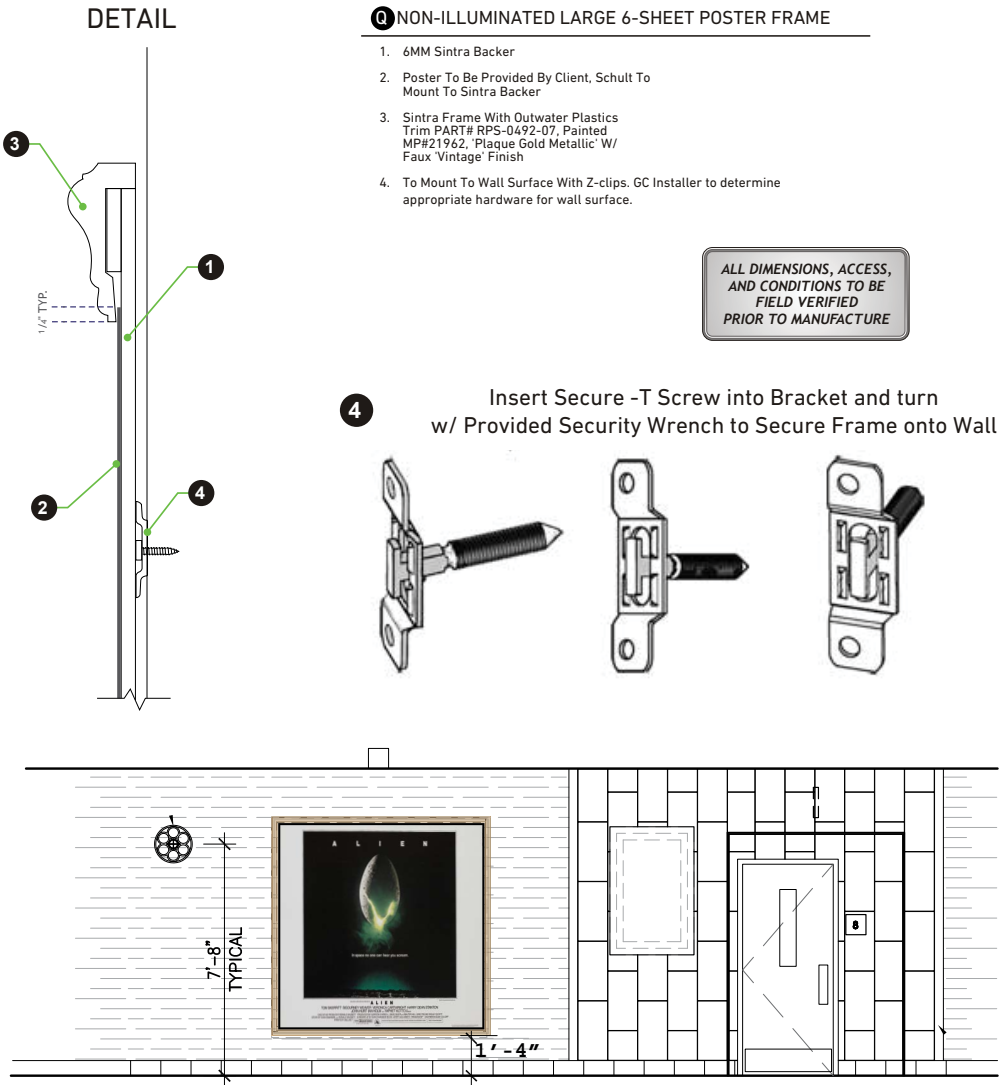
# North Richland Hills

## Interior - Non-Illuminated Large Poster Frame

### Item# Q



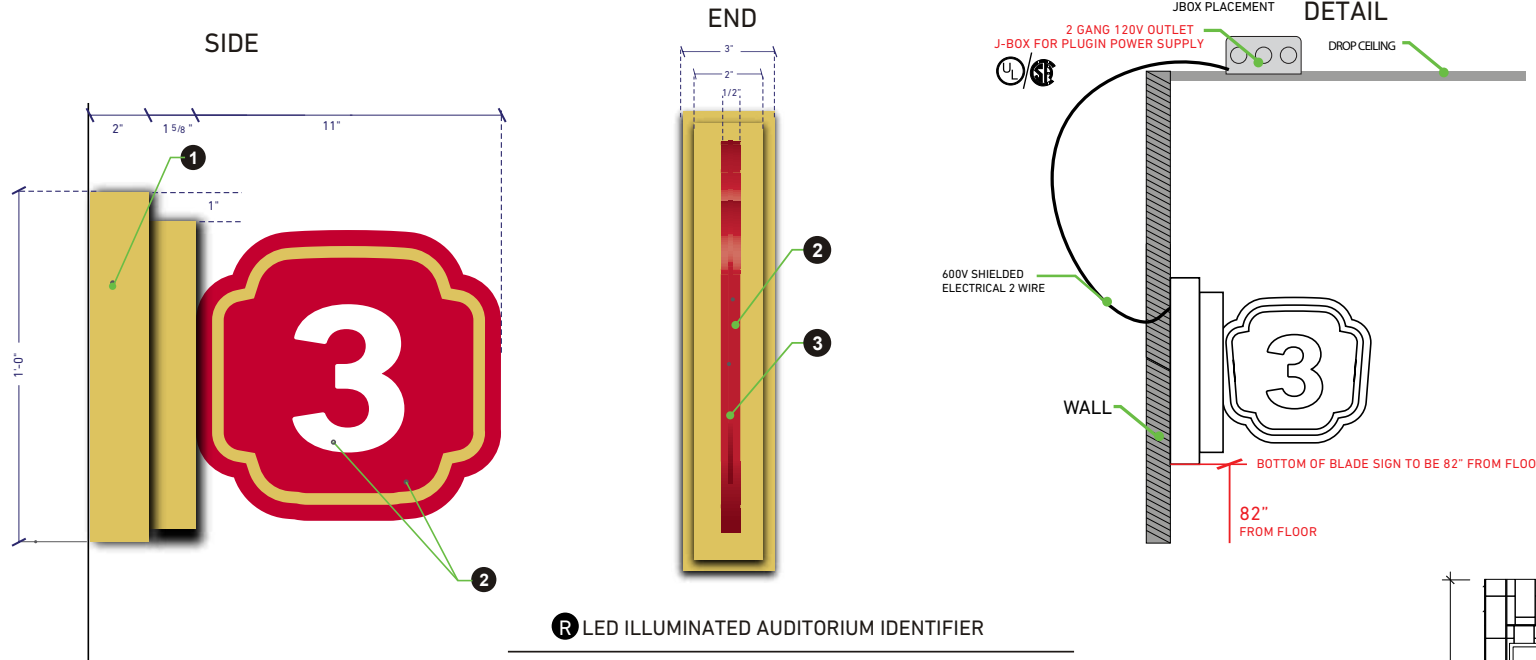
(QTY: 8)



# North Richland Hills

## Interior - LED Illuminated Auditorium Identifier Sign

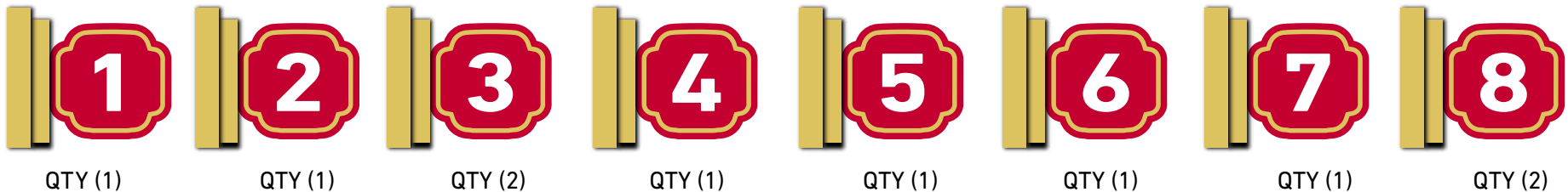
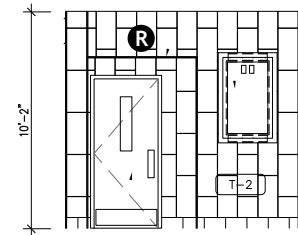
Item# R



### R LED ILLUMINATED AUDITORIUM IDENTIFIER

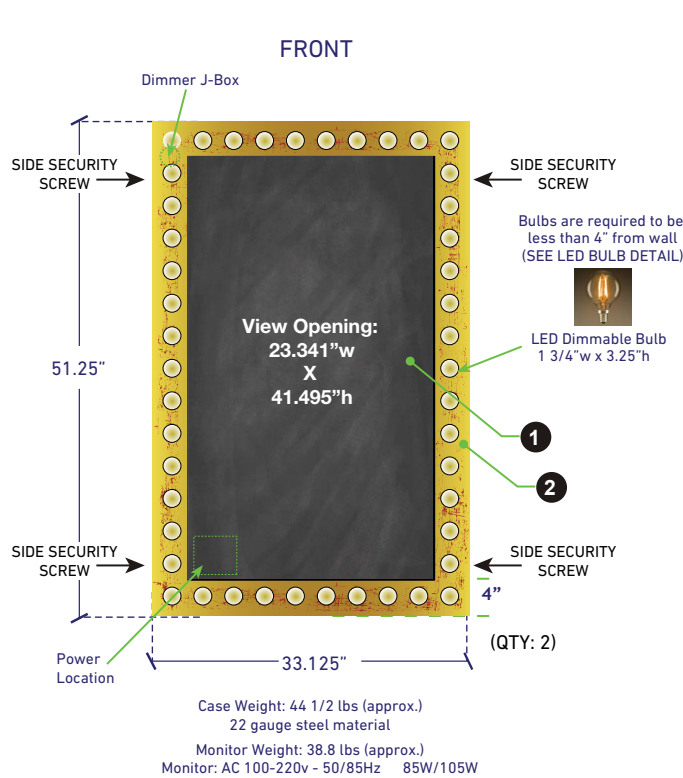
1. Fabricated Bracket, Painted MP#21962, 'Plaque Gold Metallic' W/ Faux 'Vintage' Finish
2. 3/16" Thick Clear Acrylic With Routed Edge-lit Copy
3. 1/8" Thick Acrylic, Painted To Match PMS 200C, w/ White Applied Vinyl Graphics, 'White' 3M# 220-10 And 'Sunflower' 3M# 220-25

ALL DIMENSIONS, ACCESS,  
AND CONDITIONS TO BE  
FIELD VERIFIED  
PRIOR TO MANUFACTURE



# North Richland Hills

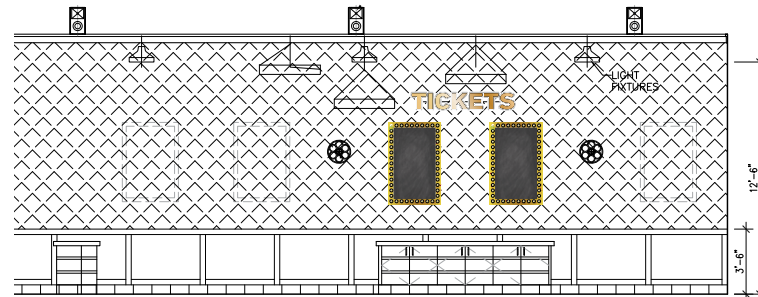
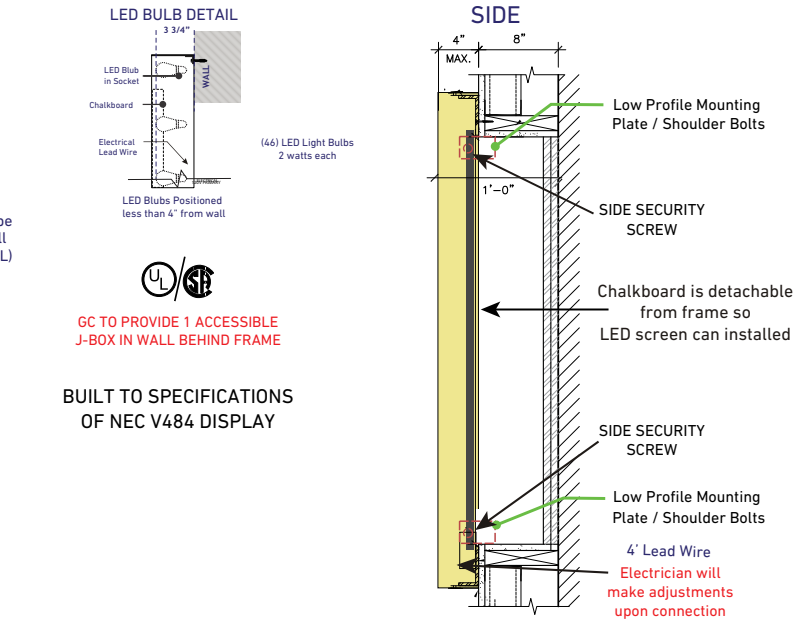
## Interior - LED Illuminated Chalkboard Option Bulb Surround Item# S-2



### ILLUMINATED LED BULB DIGITAL DISPLAY SURROUND

1. Chalkboard
2. Faux Antique Paint Process - Rust Colors w/ Gold Base Color  
Sherwin Williams SW 2814 Rockwood Antique Gold

ALL DIMENSIONS, ACCESS,  
AND CONDITIONS TO BE  
FIELD VERIFIED  
PRIOR TO MANUFACTURE

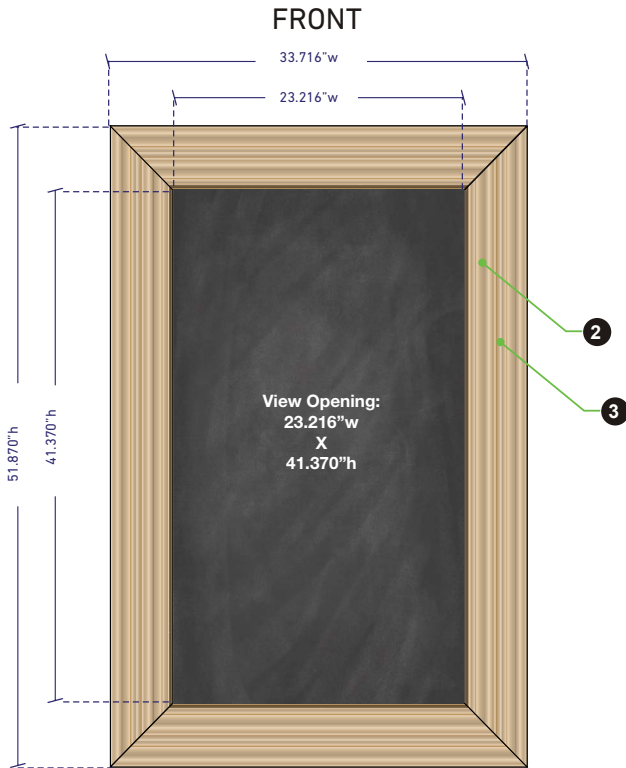




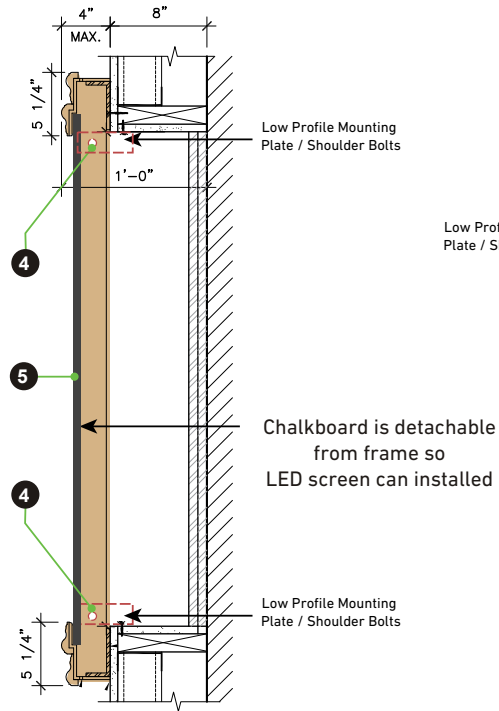
# North Richland Hills

## Interior - Non-Illuminated Chalkboard Display Surround

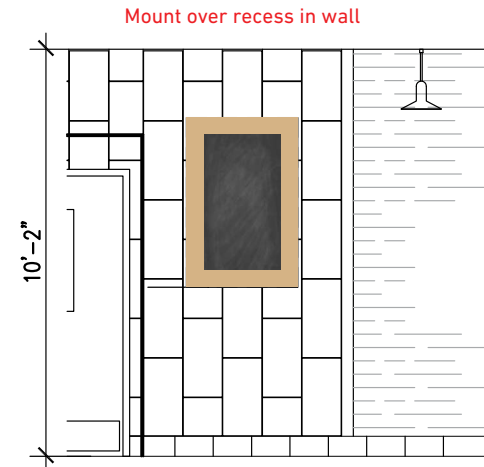
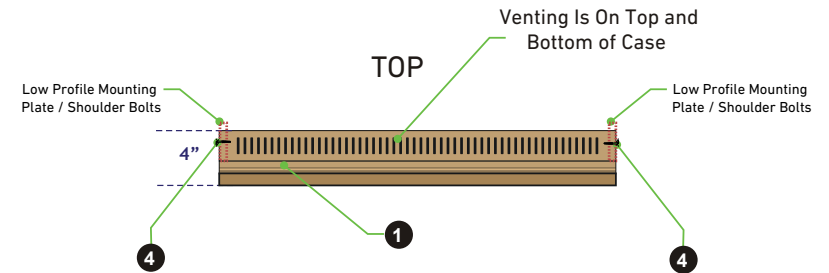
Item# T-2



(QTY: 10)



Built to specifications of NEC V484 Display



### T CHALKBOARD OPTION FOR ORNATE FRAME SURROUND FOR LED DISPLAY

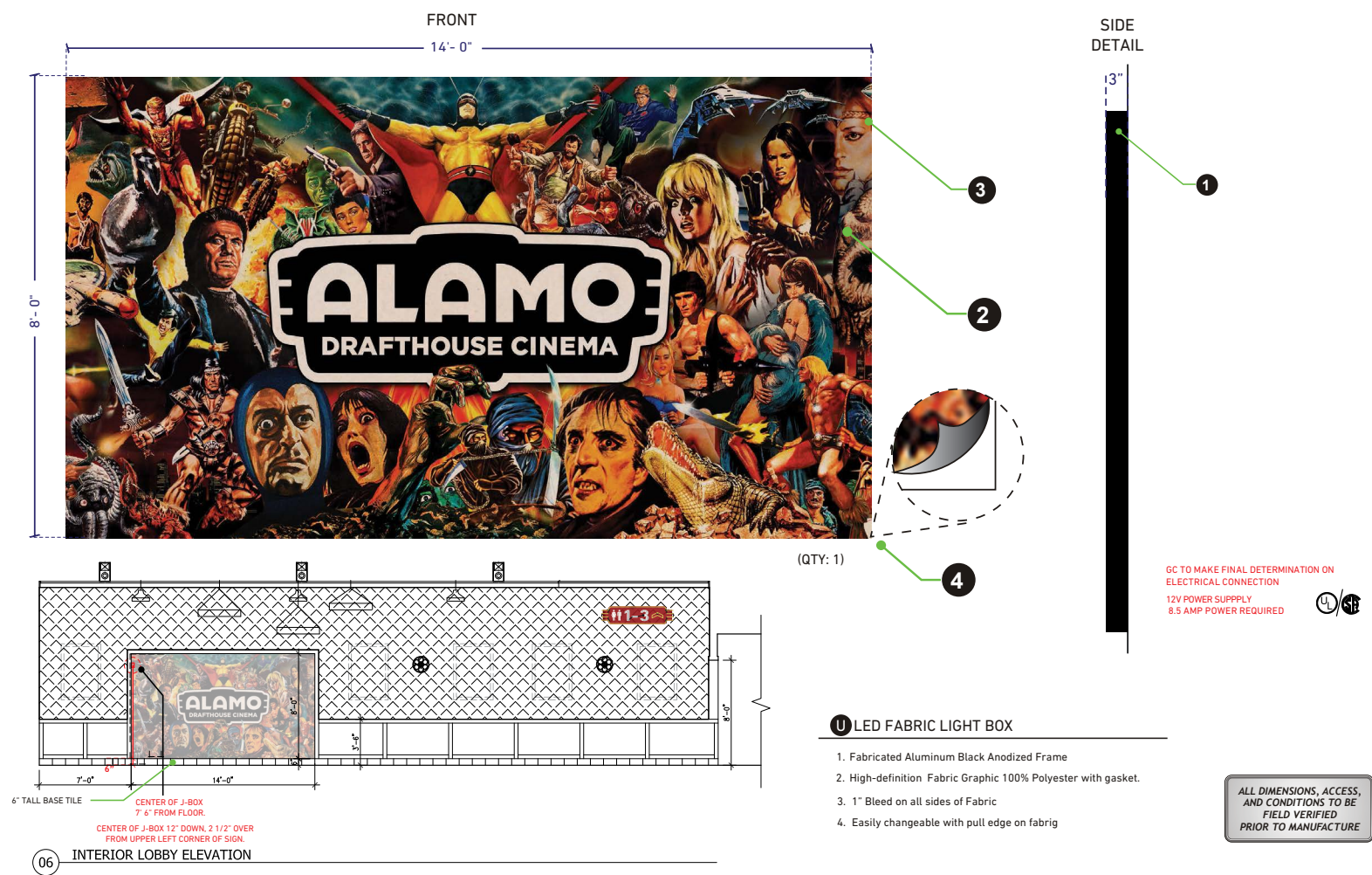
1. Fabricated Frame With Venting Along Top And Bottom Returns
2. Sintra Frame With Outwater Plastics TRIM PART# RPS-0492-07
3. All Exposed Surfaces Painted MP#21962, 'Plaque Gold Metallic' W/ Faux 'Vintage' Finish
4. Side Security Screws - Attach to hidden side mounting metal brackets
5. Chalkboard

DIMENSIONS, ACCESS, AND CONDITIONS TO BE ALL FIELD VERIFIED PRIOR TO MANUFACTURE

# North Richland Hills

## Interior - LED Illuminated Fabric Light Box

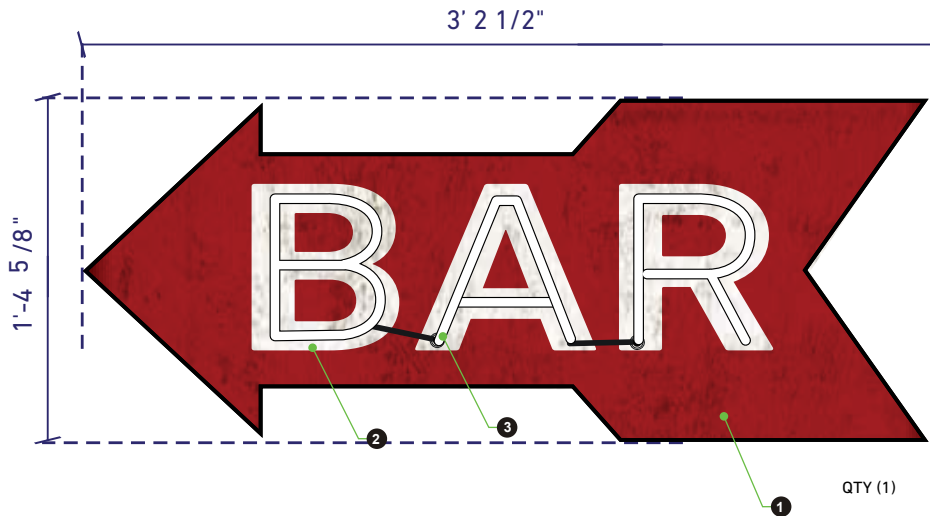
Item# U



# North Richland Hills

## Interior - LED Illuminated Neon Bar Sign

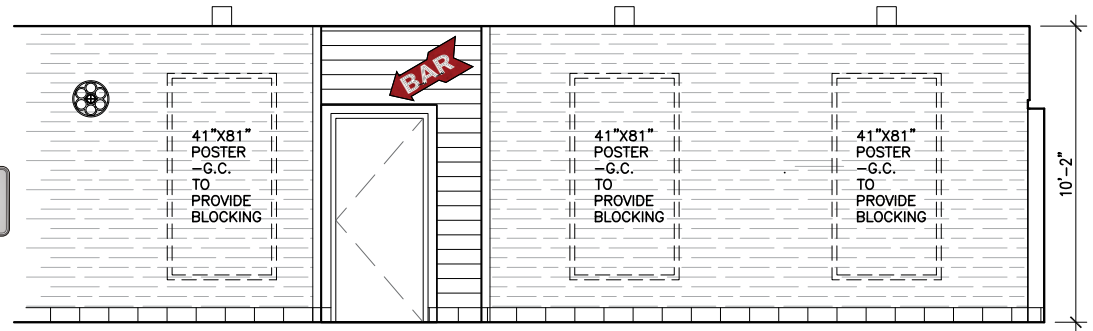
Item# V



### V ILLUMINATED NEON BAR DIRECTIONAL SIGN

1. Fabricated Aluminum Cabinet, Painted MP# 08937, 'Flexi-flyer Red' W/ Faux 'Vintage' Finish
2. Graphics Masked And Painted MP# 42202sp, 'White' W/ Faux 'Vintage' Finish
3. Exposed White Neon

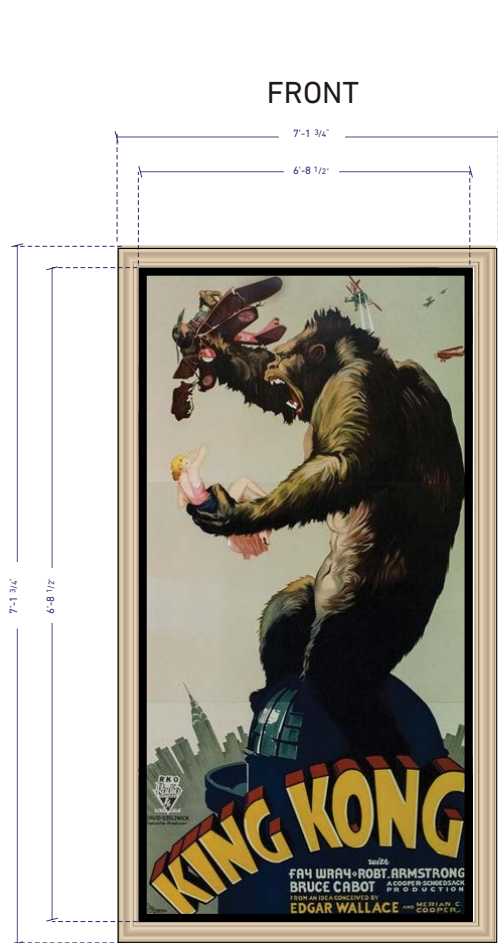
ALL DIMENSIONS, ACCESS,  
AND CONDITIONS TO BE  
FIELD VERIFIED  
PRIOR TO MANUFACTURE



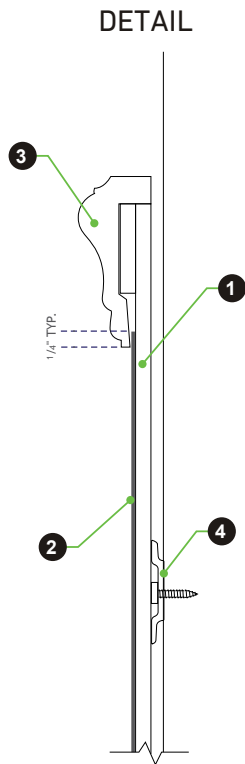
# North Richland Hills

## Interior - Non-Illuminated 3-Sheet Poster Frame

Item# W



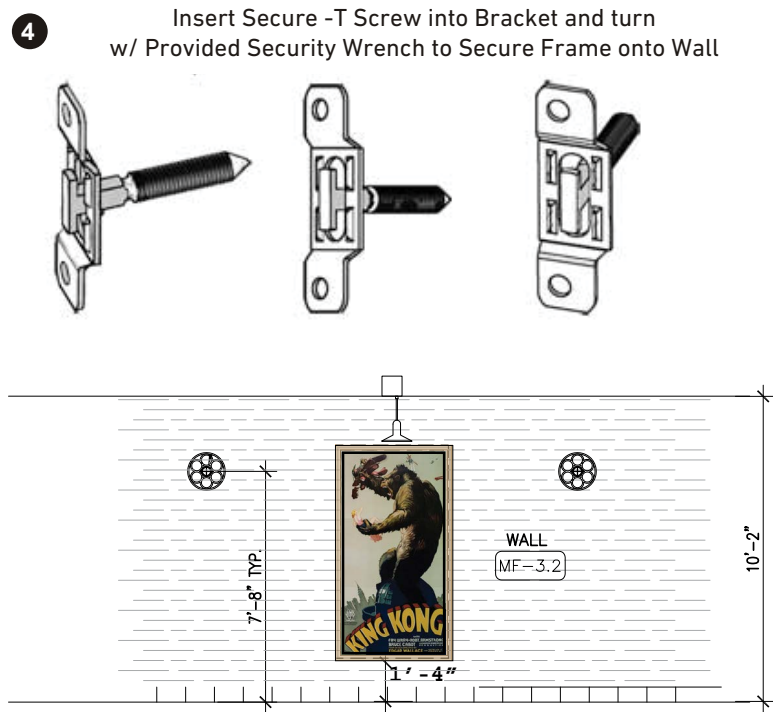
(QTY: 19)



### NON-ILLUMINATED LARGE 3-SHEET POSTER FRAME

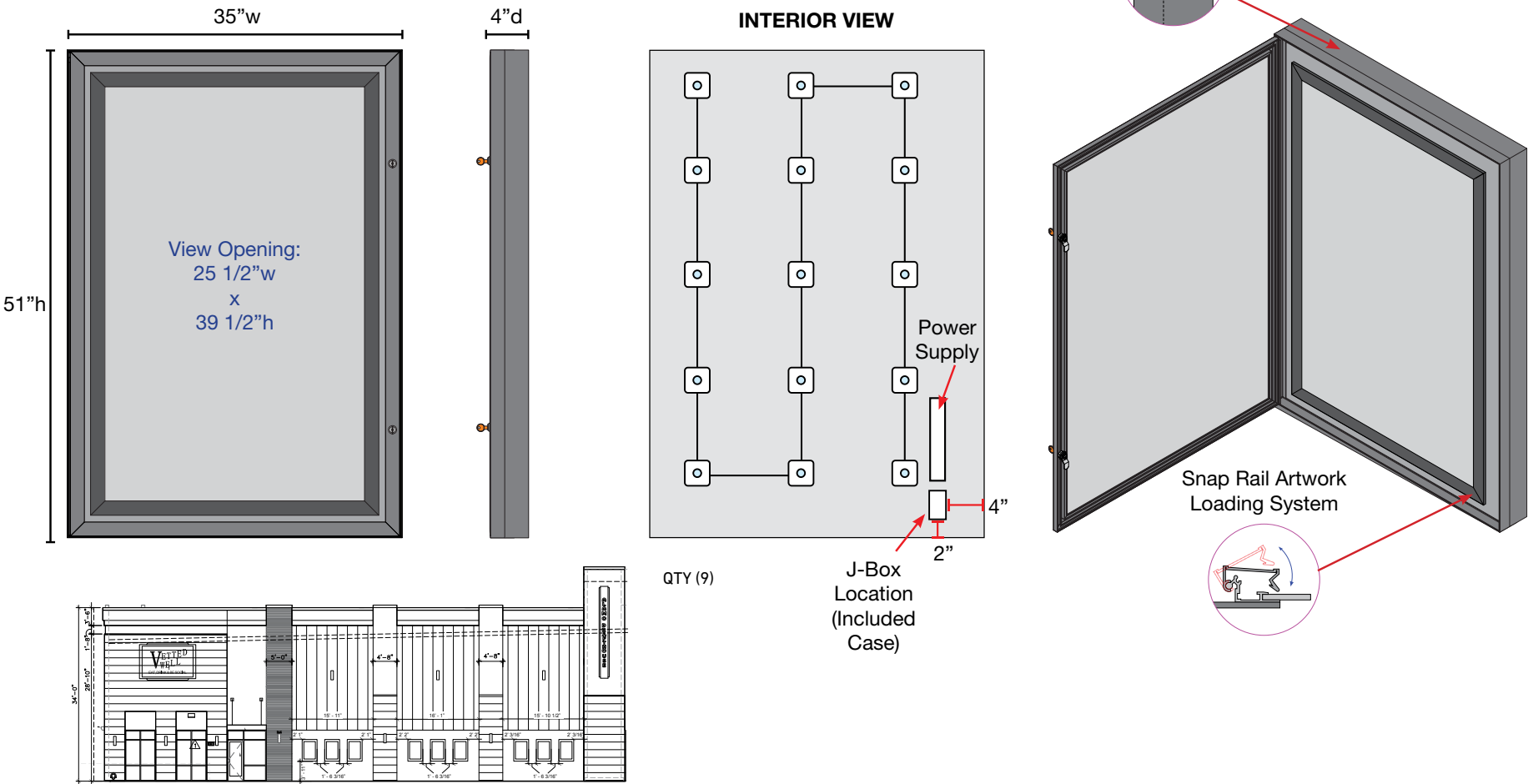
1. 6MM Sintra Backer
2. Poster To Be Provided By Client, Schult To Mount To Sintra Backer
3. Sintra Frame With Outwater Plastics Trim PART# RPS-0492-07, Painted MP#21962, 'Plaque Gold Metallic' W/ Faux 'Vintage' Finish
4. To Mount To Wall Surface With Z-clips. GC Installer to determine appropriate hardware for wall surface.

ALL DIMENSIONS, ACCESS, AND CONDITIONS TO BE FIELD VERIFIED PRIOR TO MANUFACTURE



# North Richland Hills 2nd Layer LED Poster Case

4" Deep, Exterior  
Item #10056



## Information

- Case Dimensions: 35" w x 51" h x 4" d
- Poster Size: 27" w x 41" h
- Meets ADA Requirements

## Electrical

- White LEDs
- 120vac/12vdc Transformer
- 1.5 amps/56.4 watts



## Features

- Smartbrite™ Energy-Saving LED Technology
- Tempered Glass in Locking Door
- Snap Rail Artwork Loading System

## Cleaning Recommendations

Item #7059 Clean & Shine Kit (#7057 & #7058)